

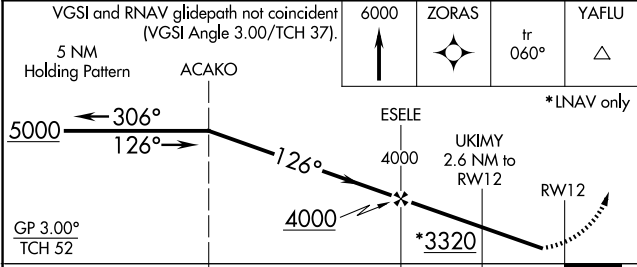
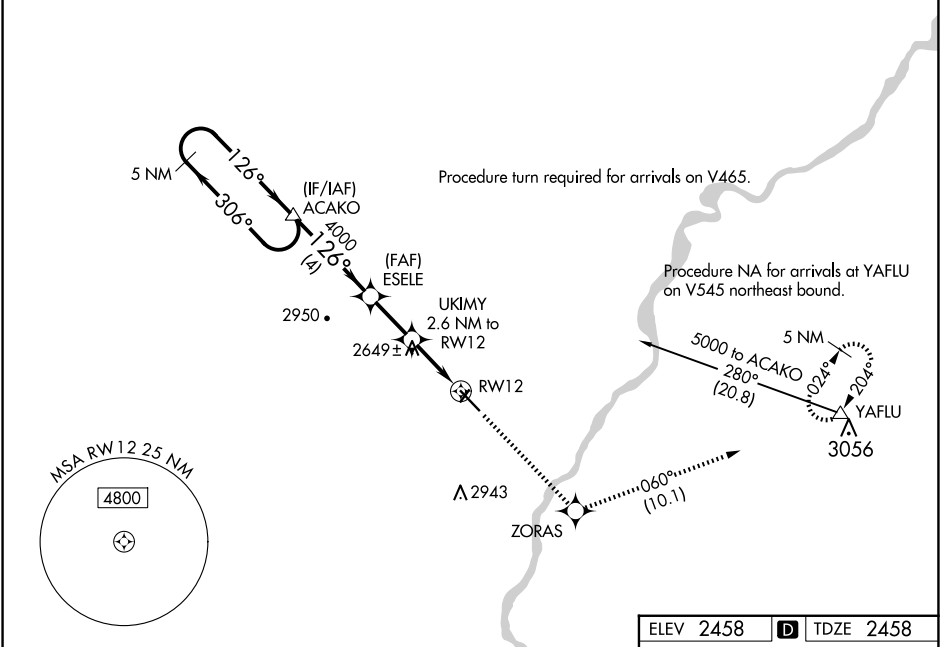
WAAS CH 40423 W12A	APP CRS 126°	Rwy Idg TDZE Apt Elev	5704 2458 2458
--	------------------------	-----------------------------	---

RNAV (GPS) RWY 12

DAWSON COMMUNITY (GDV)

RNP APCH.	MISSED APPROACH: Climb to 6000 direct ZORAS and on track 060° to YAFLU and hold, continue climb-in-hold to 6000.
For uncompensated Baro-VNAV systems, LNAV/VNAV NA below -19°C or above 28°C. When local altimeter setting not received, procedure NA. Rwy 12 helicopter visibility reduction below ¾ SM NA.	

AWOS-3PT 135.075	SALT LAKE CENTER 126.85 305.2	UNICOM 122.8 (CTAF) 1
----------------------------	---	---------------------------------



CATEGORY	A	B	C	D
LPV DA	2708-1	250 (300-1)		
LNAV/VNAV DA	2708-1	250 (300-1)		
LNAV MDA	2900-1	442 (500-1)	2900-1 3/8	442 (500-1 3/8)
CIRCLING	2900-1 442 (500-1)	2920-1 462 (500-1)	3280-2 1/2 822 (900-2 1/2)	3280-2 3/4 822 (900-2 3/4)

