

APP CRS	Rwy Ldg	4201
071°	TDZE	1027
	Apt Elev	1027

RNAV (GPS) RWY 7

SIDNEY MUNI (N23)

RNP APCH.

▼

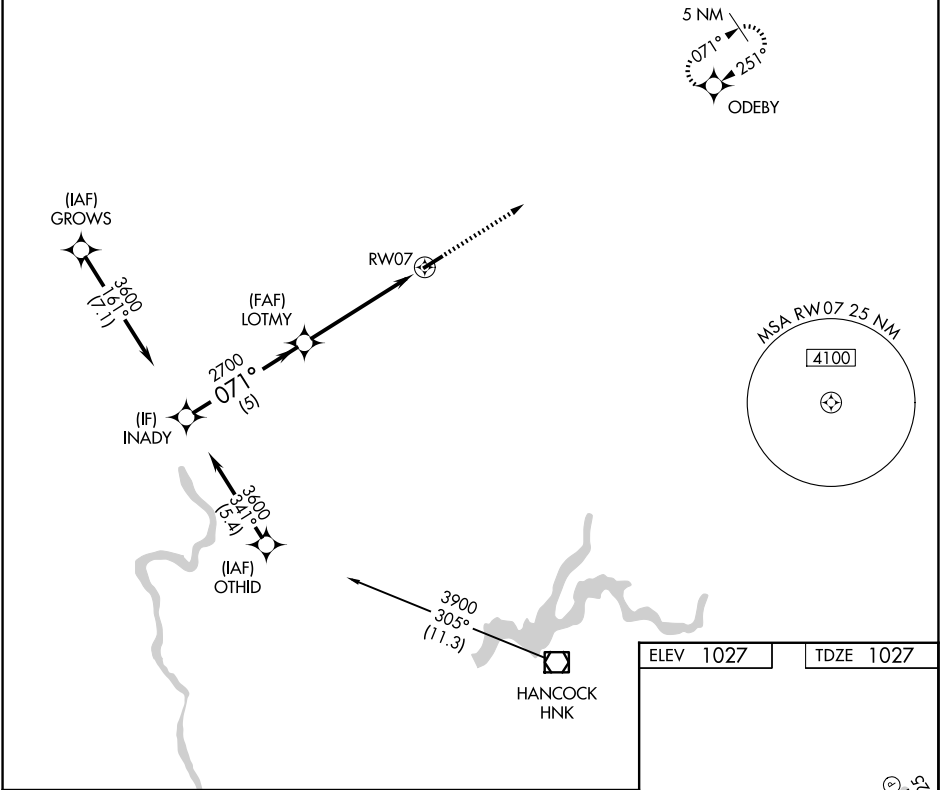
NA

-20°C

Rwy 7 helicopter visibility reduction below 1 SM NA.
Straight-in and Circling Rwy 7 NA at night.

MISSED APPROACH: Climb to 3700 direct ODEBY and hold.

AWOS-3 118.275	BOSTON CENTER 133.25 279.5	UNICOM 122.8 (CTAF) 0
-------------------	-------------------------------	--------------------------



Visual Segment - Obstacles.				3700	ODEBY
INADY				↑	✴
3600					
071°					
LOTMY					
2700					
RW07					
5 NM					
5.1 NM					
CATEGORY	A	B	C	D	
LNAV MDA	2140-1¼ 1113 (1200-1¼)	2140-1½ 1113 (1200-1½)	2140-3 1113 (1200-3)	NA	
CIRCLING	2180-1¼ 1153 (1200-1¼)	2240-1½ 1213 (1300-1½)	2460-3 1433 (1500-3)	NA	

ELEV 1027

TDZE 1027

The inset chart shows the final approach segment to RWY 7, including the runway (RW07) and the final approach fix (FAF) at LOTMY. The chart is oriented with 071° and 251° headings. The chart is labeled with NE-2, 07 AUG 2025 to 04 SEP 2025.

REIL Rwy 7 and 25 0

MIRL Rwy 7-25 0