

WAAS CH <b>50321</b> <b>W06A</b>	APP CRS <b>063°</b>	Rwy Idg <b>4111</b> TDZE <b>1446</b> Apt Elev <b>1448</b>
--	------------------------	---

APP CRS  
063°

Rwy Idg	<b>4111</b>
TDZE	<b>1446</b>
Apt Elev	<b>1448</b>

# RNAV (GPS) RWY 6

## HABERSHAM COUNTY (AJR)

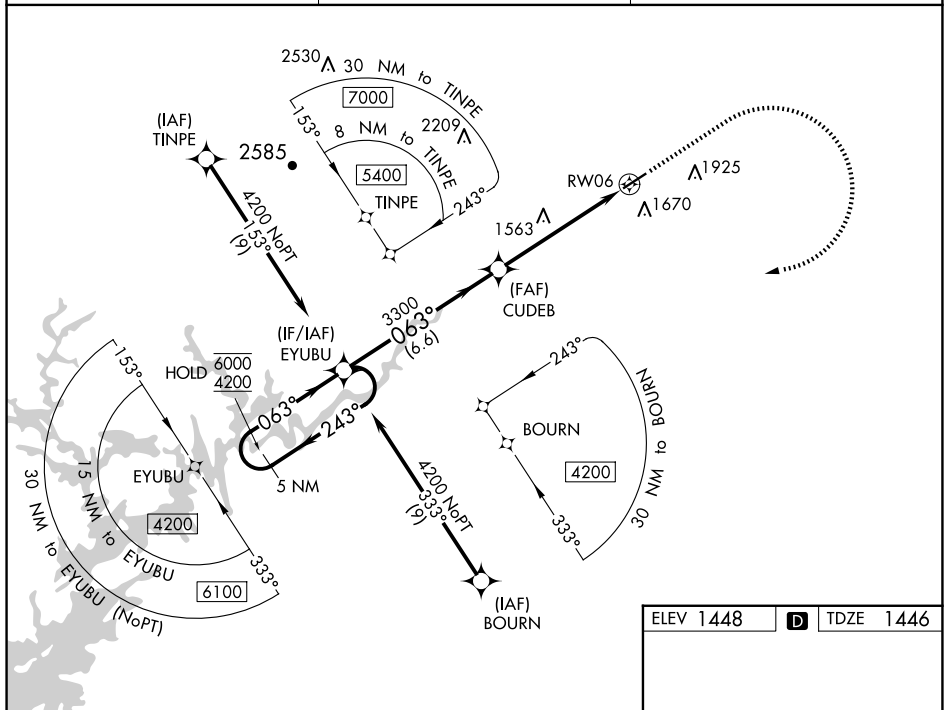
RNP APCH - GPS.

**⚠** Circling Rwy 24 NA at night. Rwy 6 helicopter visibility reduction below  $\frac{3}{4}$  SM NA. For uncompensated Baro-VNAV systems, LNAV/VNAV NA below -17°C or above 54°C.


**MISSED APPROACH:** Climb to 2000 then climbing right turn to 4200 direct EYUBU and hold.

AWOS-3  
119.175

ATLANTA CENTER  
134.8 379.95

UNICOM  
122.7 (CTAF) **L**

ELEV 1448		TDZE 1446
-----------	---	-----------

CATEGORY		A	B	C	D
LPV	DA	1710- $\frac{7}{8}$		264 (300- $\frac{7}{8}$ )	
RNAV/ VNAV	DA	1824-1		378 (400-1)	
RNAV	MDA	1980-1	534 (600-1)	1980-1 $\frac{1}{2}$	534 (600-1 $\frac{1}{2}$ )
 CIRCLING		2100-1 652 (700-1)	2280-1 $\frac{1}{4}$ 832 (900-1 $\frac{1}{4}$ )	2280-2 $\frac{1}{2}$ 832 (900-2 $\frac{1}{2}$ )	2280-2 $\frac{3}{4}$ 832 (900-2 $\frac{3}{4}$ )

MIRL Rwy 6-24 