

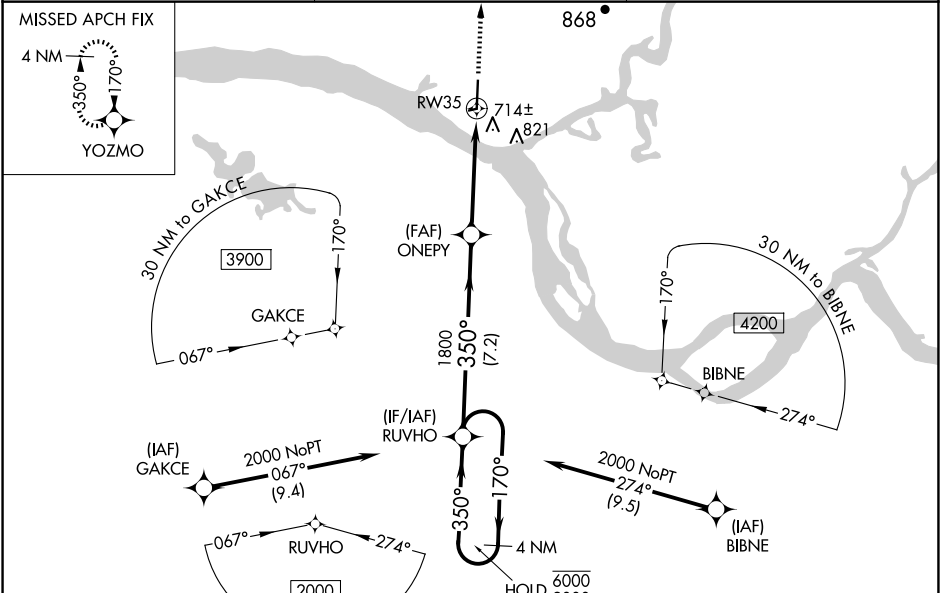
WAAS CH 87028 W35A	APP CRS 350°	Rwy Idg TDZE Apt Elev	6008 308 312
--	------------------------	-----------------------------	---

RNAV (GPS) RWY 35

ST MARY'S (KSM)(PASM)

RNP APCH - GPS.	<p>⚠ Circling NA east of Rwy 17-35. Rwy 35 helicopter visibility reduction below 1 SM NA. Baro-VNAV NA when using Mountain Village altimeter setting. For uncompensated Baro-VNAV systems, LNAV/VNAV NA below -19°C or above 54°C. When local altimeter setting not received, use Mountain Village altimeter setting and increase all DA 29 feet and all MDAs 40 feet and LNAV visibility Cat C/D ½ SM and Circling visibility Cat C ½ SM, Cat D ¼ SM.</p>	MISSED APPROACH: Climb to 2600 direct YOZMO and hold.
-----------------	---	--

AWOS-3P 128.7	ANCHORAGE CENTER 124.0	CTAF 122.3
-------------------------	----------------------------------	----------------------



2000

30 NM to RUVHO (NoPT)

2000

4 NM Holding Pattern		RUVHO	ONEPY	2600 ↑	YOZMO
<div>6000</div> <div>2000</div>	←170° 350°→	350° 1800	1800 1800	RW35 	
GP 3.00° TCH 50		7.2 NM	4.5 NM		
CATEGORY	A	B	C	D	
LPV DA	508-1 200 (200-1)				
LNAV/ VNAV DA	884-2 576 (600-2)				
LNAV MDA	960-1 652 (700-1)		960-1 652 (700-1)		
C CIRCLING	960-1 648 (700-1)		960-1 648 (700-1)	960-2 648 (700-2)	

ELEV 312

TDZE 308

L1
 6008 X 150 0.3% UP
 1520 X 60 0.4% UP
 35
 350°

REIL Rwy 17 and 35
 HIRL Rwy 17-35
 MIRL Rwy 6-24