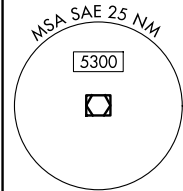
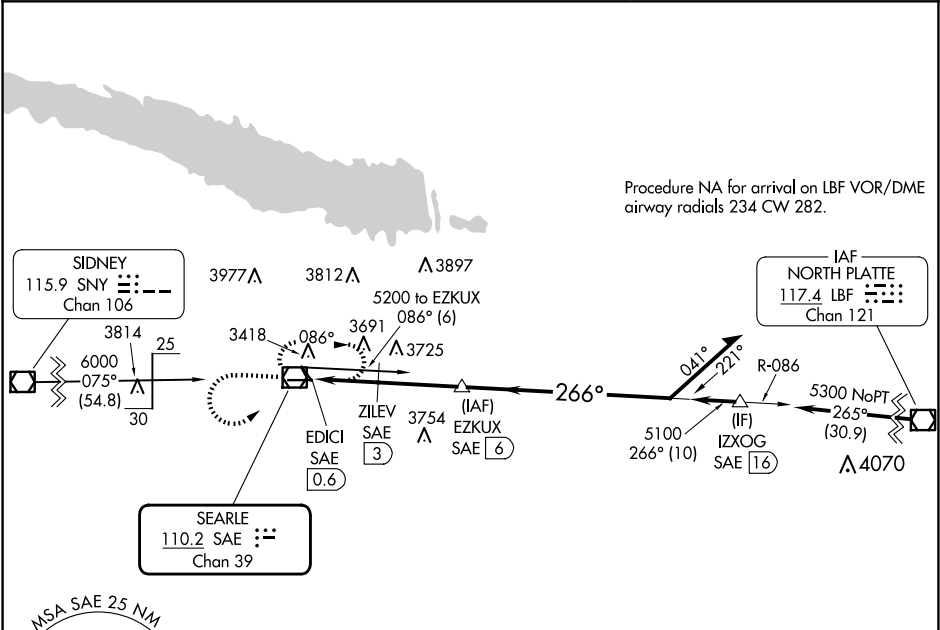


VOR/DME SAE	APP CRS	Rwy Idg	5102
110.2	266°	TDZE	3254
Chan 39		Apt Elev	3279

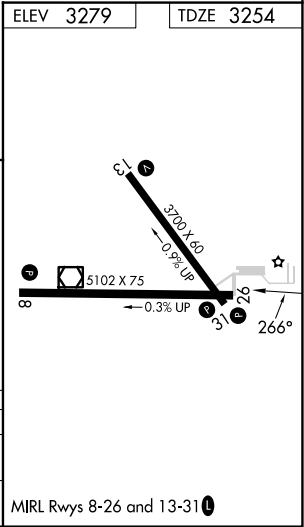
VOR RWY 26
SEARLE FLD (OGA)

DME required.	MISSED APPROACH: Climb to 4400 then climbing left turn to 5300 direct SAE VOR/DME and hold, continue climb-in-hold to 5300.
---------------	---

AWOS-3 121.275	DENVER CENTER 132.7 397.85	UNICOM 122.8 (CTAF) 0
-------------------	-------------------------------	--------------------------



4400	5300	SAE	EZKUX SAE 6	Remain within 10 NM
SAE VOR/DME	EDICI SAE 0.6	ZILEV SAE 3	3.16° TCH 48	5200
4080	5100	266°		
2.4 NM	3 NM			
CATEGORY	A	B	C	D
S-26	3940-1	686 (700-1)	NA	
CIRCLING	3940-1 661 (700-1)	4000-1 721 (800-1)	NA	



NC-2, 07 AUG 2025 to 04 SEP 2025

NC-2, 07 AUG 2025 to 04 SEP 2025