

WAAS CH 82229 W31A	APP CRS 317°	Rwy Idg TDZE Apt Elev	3700 3272 3279
--	------------------------	-----------------------------	---

RNAV (GPS) RWY 31

SEARLE FLD (OGA)

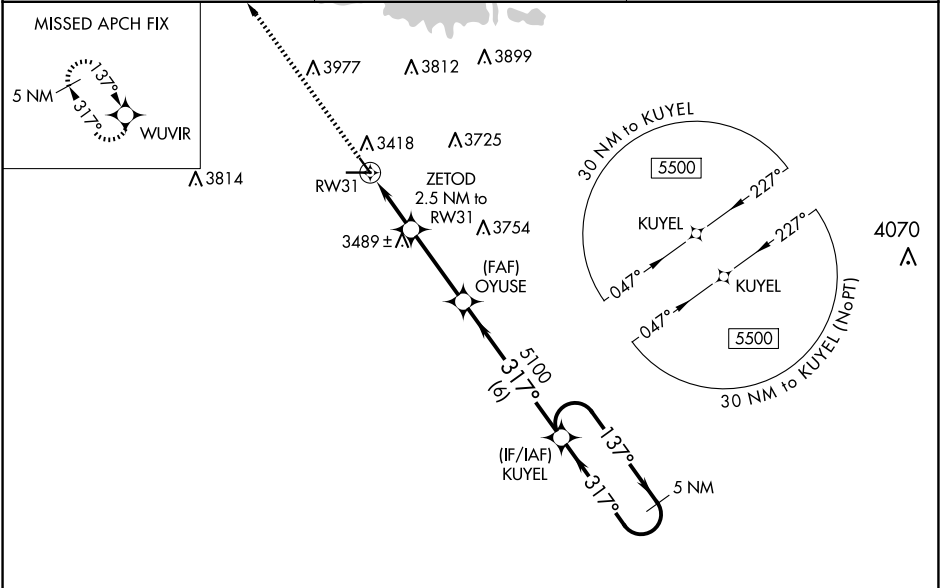
RNP APCH.

▼

Baro-VNAV and VDP NA when using Imperial altimeter setting. For uncompensated Baro-VNAV systems, LNAV/VNAV NA below -21°C or above 54°C. Helicopter visibility reduction below ¾ SM NA. When local altimeter setting not received, use Imperial altimeter setting and increase all DA 86 feet and all MDA 100 feet, increase LPV and LNAV/VNAV all Cats visibility ⅓ SM, and Circling Cat B visibility ¼ SM.

MISSED APPROACH: Climb to 5400 direct WUVIR and hold.

AWOS-3 121.275	DENVER CENTER 132.7 397.85	UNICOM 122.8 (CTAF) 1
--------------------------	--------------------------------------	---------------------------------



ELEV 3279 TDZE 3272

5400 WUVIR

*LNAV only.

ZETOD 2.5 NM to RW31

*1.4 NM to RW31

4080*

1.4 NM 1.1 NM 3.2 NM 6 NM

OYUSE 5100

KUYEL 5100

5 NM Holding Pattern

137° 317° 5500

GP 3.00° TCH 40

CATEGORY	A	B	C	D
LPV DA	3522-1	250 (300-1)	NA	
LNAV/VNAV DA	3522-1	250 (300-1)	NA	
LNAV MDA	3740-1	468 (500-1)	NA	
CIRCLING	3940-1 661 (700-1)	4000-1 721 (800-1)	NA	