

APP CRS	Rwy Idg	2801
019°	TDZE	1116
	Apt Elev	1116

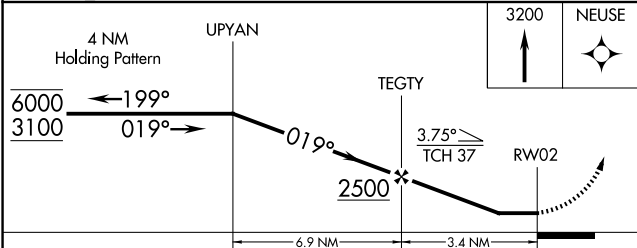
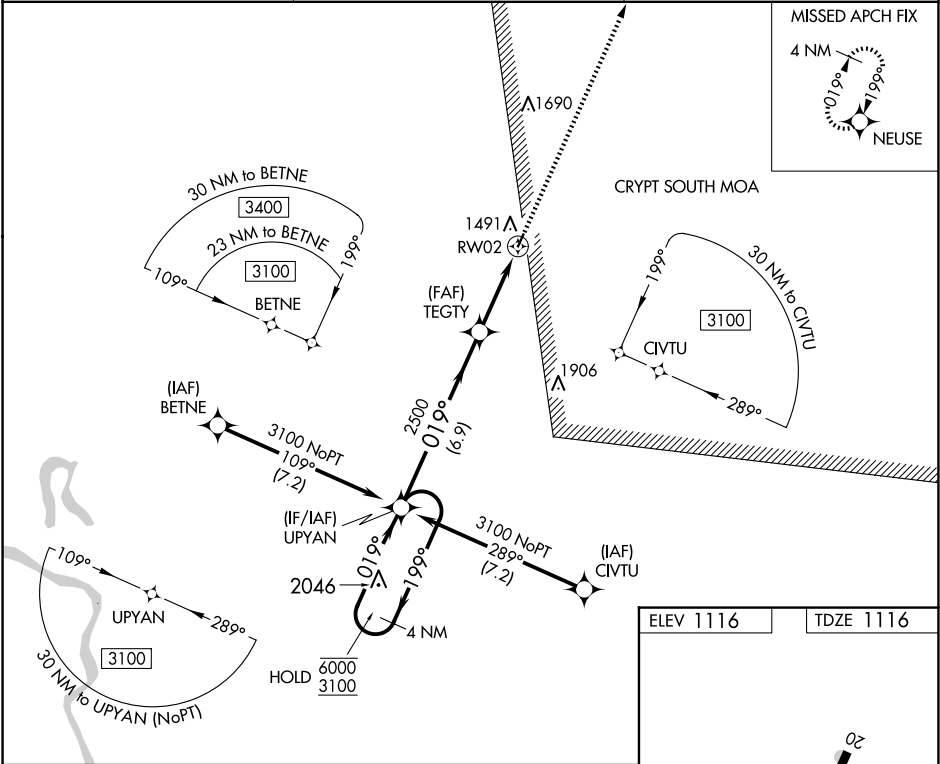
RNAV (GPS) RWY 2
JAMES G WHITING MEML FLD (MEY)

RNP APCH - GPS.

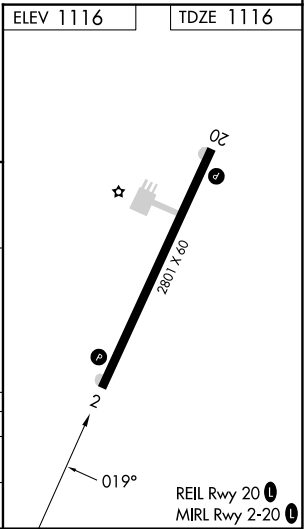
NA Procedure NA at night. Rwy 2 helicopter visibility reduction below 1 SM NA. Use Sioux City altimeter setting, when not received use Denison altimeter setting and increase all MDAs 20 feet and visibility LNAV Cat B ¼ SM, and visibility Circling Cat C ¼ SM.

MISSED APPROACH: Climb to 3200 direct NEUSE and hold.

SUX ASOS 119.45 270.8	SIOUX CITY APP CON ★ 124.6 307.0	UNICOM 122.8 (CTAF) 0
--------------------------	-------------------------------------	--------------------------



CATEGORY	A	B	C	D
LNAV MDA	1840-1	724 (800-1)	1840-2	NA
			724 (800-2)	
CIRCLING	1880-1	1940-1¼	1980-2½	NA
	764 (800-1)	824 (900-1¼)	864 (900-2½)	



NC-3, 07 AUG 2025 to 04 SEP 2025

NC-3, 07 AUG 2025 to 04 SEP 2025