

APP CRS	Rwy Ldg	5000
150°	TDZE	1718
	Apt Elev	1718

# RNAV (GPS) RWY 15

## MADISON MUNI (MDS)

RNP APCH - GPS.

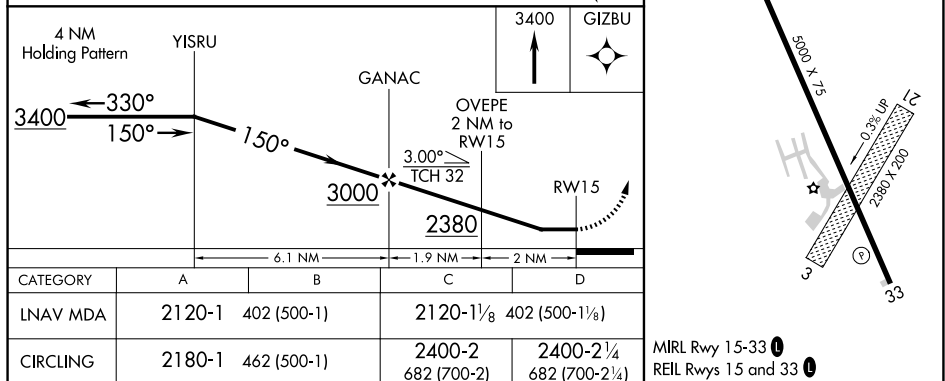
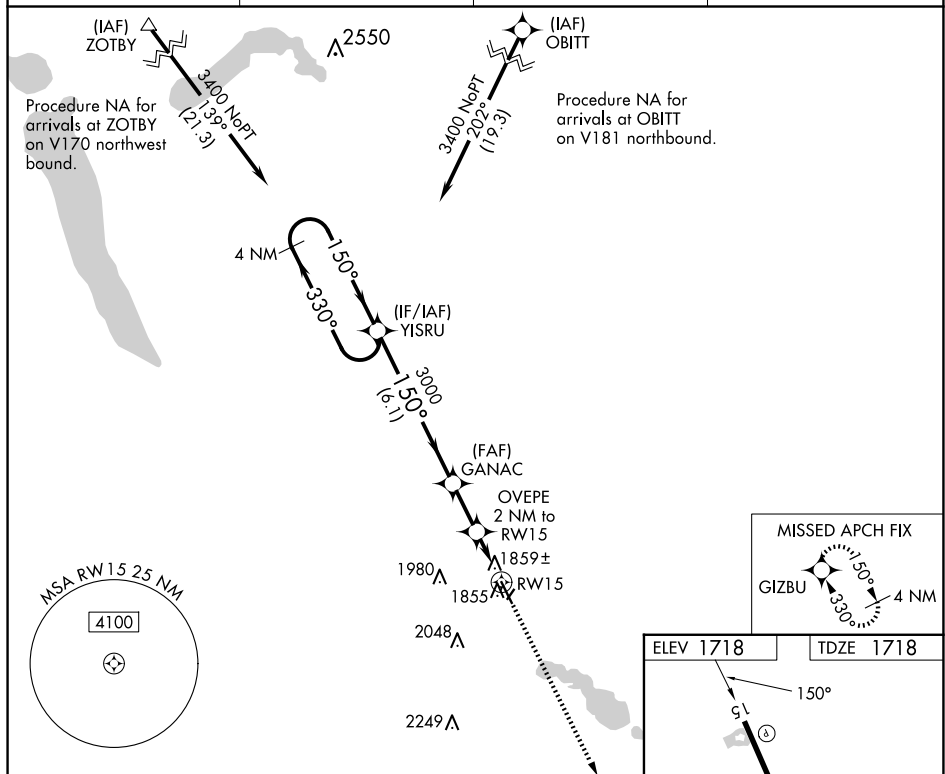
- T** Circling NA to Rwy 3 and 21. Rwy 15 helicopter visibility reduction below  $\frac{3}{4}$  SM NA.  
**A** When local altimeter setting not received, use Brookings altimeter setting: increase all MDAs 60 feet and visibility LNAV and Circling Cat C and D  $\frac{1}{4}$  SM.

MISSED APPROACH: Climb to 3400 direct GIZBU and hold.

AWOS-3  
118.35

MINNEAPOLIS CENTER  
132.05 317.4

GCO  
121.725

UNICOM  
122.8 (CTAF) **L**

MADISON, SOUTH DAKOTA  
Orig-C 08SEP22

44°01'N-97°05'W

MADISON MUNI (MDS)

RNAV (GPS) RWY 15