

WAAS CH <b>63216</b> <b>W15A</b>	APP CRS <b>151°</b>	Rwy Idg TDZE <b>236</b> Apt Elev <b>236</b>
--	------------------------	---

RNAV (GPS) RWY 15

RICHMOND EXEC/CHESTERFIELD COUNTY (F'CI)

RNP APCH.

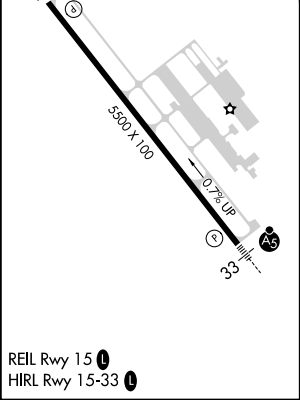
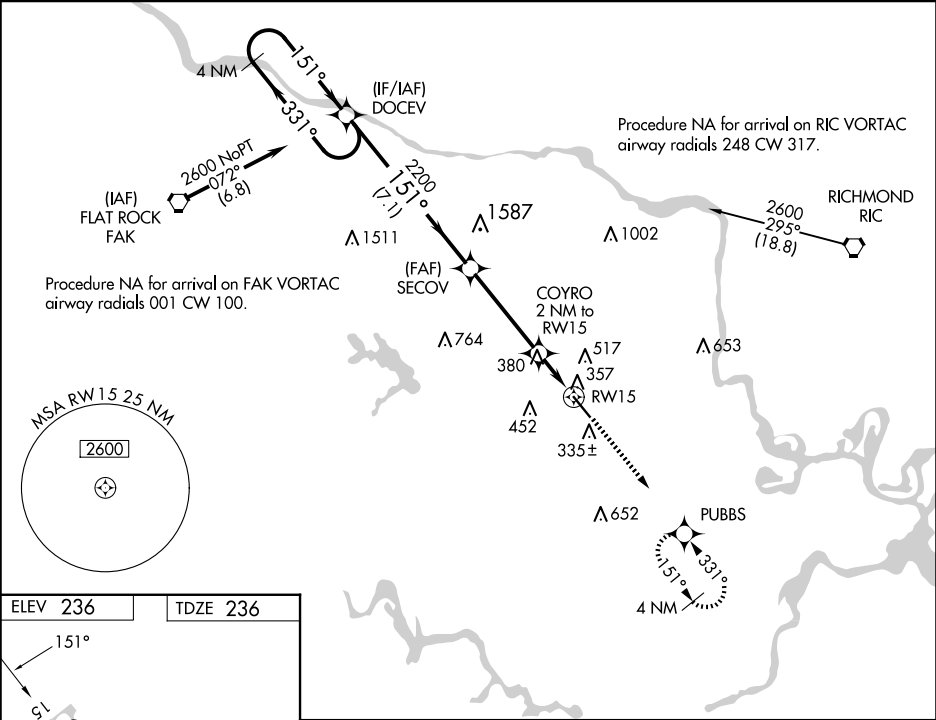
▽

△NA

For uncompensated Baro-VNAV systems, LNAV/VNAV NA below -15°C or above 54°C. When local altimeter setting not received, use Richmond Intl altimeter setting and increase all DA 36 feet, and all MDA 40 feet, increase LNAV/VNAV all Cats visibility ¼ mile. VDP and Baro-VNAV NA when using Richmond Intl altimeter setting.

MISSED APPROACH: Climb to 2000 direct PUBBS and hold.

AWOS-3PT <b>128.625</b>	POTOMAC APP CON <b>126.75 307.2</b>	CLNC DEL <b>124.6</b>	UNICOM <b>123.05 (CTAF) 1</b>
----------------------------	--	--------------------------	----------------------------------



	4 NM Holding Pattern	DOCEV	SECOV	COYRO 2 NM to RW15	2000	PUBBS
	2600	2200	2200	*900		
	GP 3.00° TCH 43					
		7.1 NM	3.9 NM	0.7 NM	1.3 NM	
CATEGORY	A	B	C	D		
LPV DA	486-1	250 (300-1)				
LNAV/VNAV DA	692-1½	456 (500-1½)				
LNAV MDA	680-1	444 (500-1)	680-1¾ 444 (500-1¾)	680-1½ 444 (500-1½)		