

LOC/DME I-CFU <b>108.3</b> Chan <b>20</b>	APP CRS <b>331°</b>	Rwy Idg <b>5500</b> TDZE <b>217</b> Apt Elev <b>236</b>
---	------------------------	---

## ILS or LOC RWY 33

RICHMOND EXEC/CHESTERFIELD COUNTY (FCI)

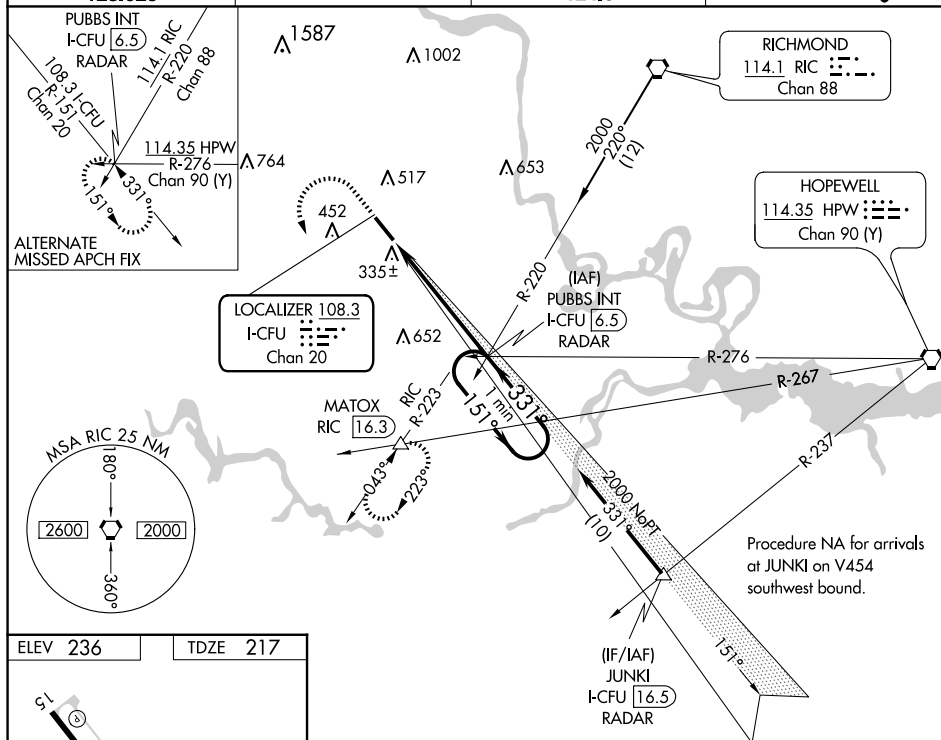
**T** When local altimeter setting not received, use Richmond Intl altimeter setting; increase DA to 453 feet; increase all MDAs 40 feet and S-LOC 33 visibility Cat C/D  $\frac{1}{8}$  SM and Circling visibility Cat D  $\frac{1}{4}$  SM. **A** NA VDP NA with Richmond Intl altimeter setting.

MALSR



**MISSED APPROACH:** Climb to 800, then climbing left turn to 2000 via heading 148° and RIC VORTAC R-223 to MATOX INT/RIC 16.3 DME and hold.

AWOS-3PT <b>128.625</b>	POTOMAC APP CON <b>126.75 307.2</b>	CLNC DEL <b>124.6</b>	UNICOM <b>123.05 (CTAF) 0</b>
----------------------------	--	--------------------------	----------------------------------



ELEV 236

TDZE 217

51

33

5500 X 100

0.7% UP

331°

REIL Rwy 15

HIRL Rwy 15-33

FAF to MAP 5.4 NM

	60	90	120	150	180
Knots	5:24	3:36	2:42	2:10	1:48

<div style="display: flex; justify-content: space-around;"> <div> 800 ↑ hdg 148° </div> <div> RIC R-223 </div> <div> MATOX △ </div> </div>	PUBBS INT I-CFU 6.5 RADAR			One Minute Holding Pattern
*LOC only. 	GS 3.00° TCH 49			
CATEGORY	A	B	C	D
S-ILS 33	417-½ 200 (200-½)			
S-LOC 33	660-½	443 (500-½)	660-¾	443 (500-¾)
CIRCLING	720-1 484 (500-1)	760-1 524 (600-1)	760-1½ 524 (600-1½)	1020-2½ 784 (800-2½)