

APP CRS  
**081°**

Rwy Idg **4802**  
TDZE **912**  
Apt Elev **912**


RNAV (GPS) RWY 8  
NEIL ARMSTRONG (AXV)

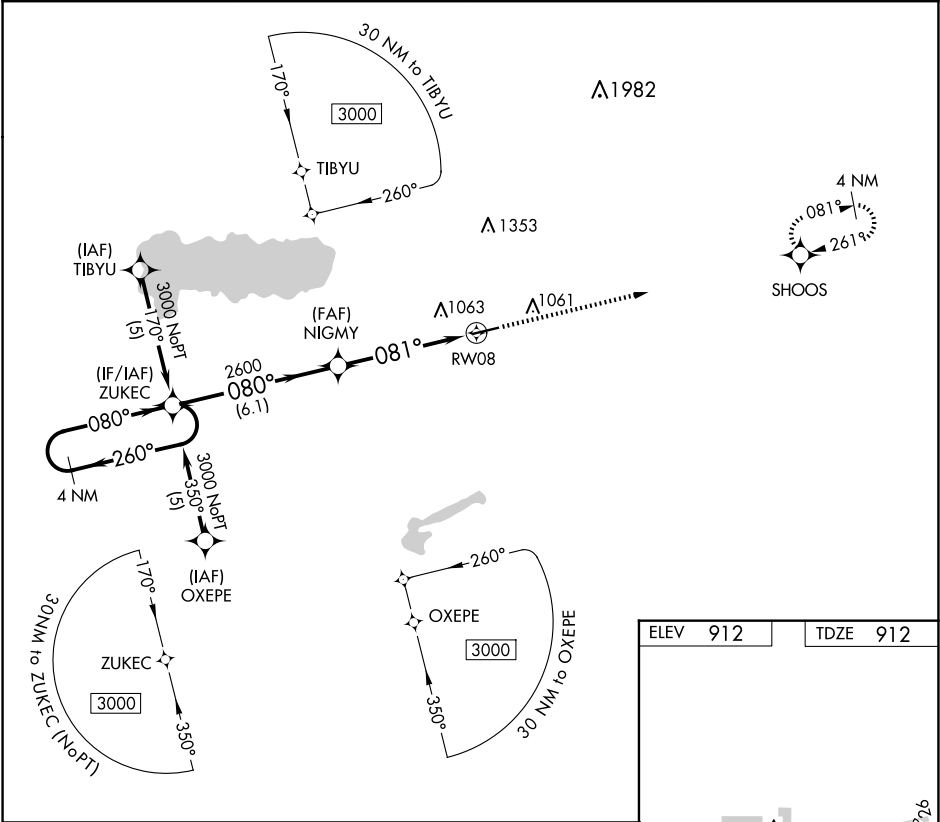
RNP APCH - GPS.

NA

Rwy 8 helicopter visibility reduction below 1 SM NA. When local altimeter setting not received, use Lima altimeter setting and increase all MDAs 60 feet and visibility Cat C ½ SM. Procedure NA at night.

MISSED APPROACH: Climb to 3000 direct SHOOS and hold.

AWOS-3PT <b>128.325</b>	COLUMBUS APP CON <b>134.45 294.5</b>	UNICOM <b>122.8</b> (CTAF)	<b>122.7</b> 
----------------------------	---	-------------------------------	--



4 NM Holding Pattern

VGSI and descent angles not coincident (VGSI Angle 4.00/TCH 50).

3000

SHOOS

3000

260°

080°

ZUKEC

080°

NIGMY

2600

081°


RW08

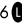
3.04° TCH 40

6.1 NM

5.1 NM

CATEGORY	A	B	C	D
LNAV MDA	1380-1	468 (500-1)	1380-1¼ 468 (500-1¼)	NA

MIRL Rwy 8-26 

REIL Rws 8 and 26 

EC-2, 07 AUG 2025 to 04 SEP 2025

EC-2, 07 AUG 2025 to 04 SEP 2025