

WAAS

CH **72907**

W26A

APP CRS

261°

Rwy Idg

5263

TDZE

910

Apt Elev

912

RNAV (GPS) RWY 26

NEIL ARMSTRONG (AXV)

RNP APCH - GPS.

▽

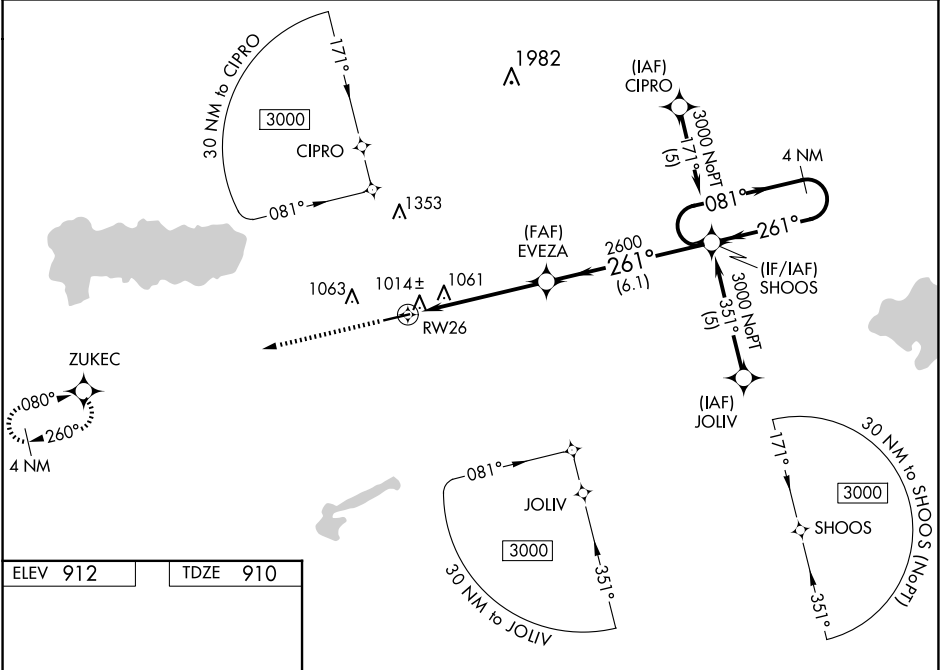
△NA

Baro-VNAV NA when using Lima altimeter setting. For uncompensated Baro-VNAV systems, LNAV/VNAV NA below -16°C or above 54°C. Rwy 26 helicopter visibility reduction below 1 SM NA. When local altimeter setting not received, use Lima altimeter setting and increase LPV DA to 1291 feet and all visibilities ½ SM. Increase LNAV/VNAV DA to 1324 feet and all visibilities ½ SM. Increase all MDAs 60 feet and LNAV visibility Cat C ¼ SM.

MISSED APPROACH:

Climb to 3000 direct ZUKEC and hold.

AWOS-3PT 128.325	COLUMBUS APP CON 134.45 294.5	UNICOM 122.8 (CTAF)	122.7
----------------------------	---	-------------------------------	--------------



ELEV 912

TDZE 910

3000

ZUKEC

↑

5500 X 100

261°

260°

8

0

0

0

3000

EVEZA

2600

RW26

5.1 NM

6.1 NM

SHOOS

4 NM Holding Pattern

081°

261°

3000

GP 3.00°

TCH 40

CATEGORY	A	B	C	D
LPV DA	1241-1¼	331 (400-1¼)		NA
LNAV/VNAV DA	1274-1¼	364 (400-1¼)		NA
LNAV MDA	1440-1	530 (600-1)	1440-1½ 530 (600-1½)	NA

MIRL Rwy 8-26

REIL Rwys 8 and 26