

APP CRS  
192°

Rwy Idg  
TDZE  
269

Apt Elev  
278

RNAV (GPS) RWY 19

MINDEN (MNE)

RNP APCH.

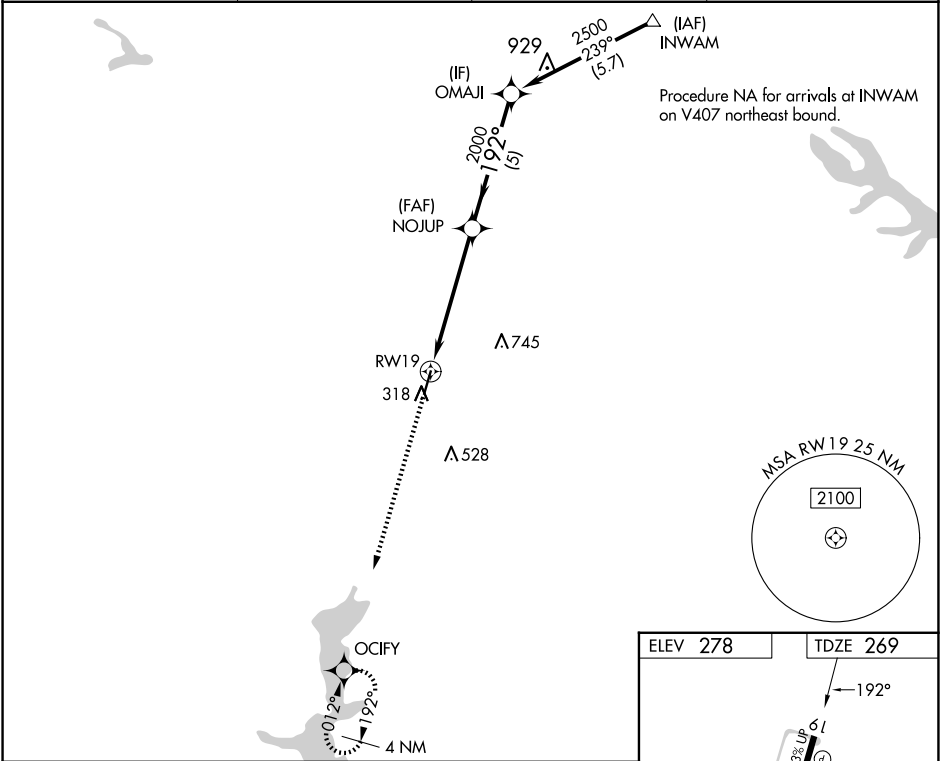
▼

▲

Rwy 19 helicopter visibility reduction below ¾ SM NA. When local altimeter setting not received, use Barksdale AFB altimeter setting; increase all MDAs 80 feet; increase visibility LNAV Cats C/D ½ SM and Circling Cats C/D ¼ SM.

MISSED APPROACH:  
Climb to 2500 direct OCIFY and hold.

AWOS-3PT 119.325	SHREVEPORT APP CON 123.75 360.725	GCO 135.075	UNICOM 122.8 (CTAF) 0
---------------------	--------------------------------------	----------------	--------------------------



2500

OCIFY

Visual Segment - Obstacles.

1.2 NM to RWY 19

1.2 NM

4.1 NM

5 NM

192°

2500

2000

NOJUP

OMAJI

CATEGORY	A	B	C	D
LNAV MDA	820-1	551 (600-1)	820-1½	551 (600-1½)
CIRCLING	820-1	542 (600-1)	1060-2¼ 782 (800-2¼)	1060-2½ 782 (800-2½)

ELEV 278

TDZE 269

192°

0.3% UP

5004 X 75

380

MIRL Rwy 1-19 0

REIL Rwy 1 and 19

SC-4, 07 AUG 2025 to 04 SEP 2025

SC-4, 07 AUG 2025 to 04 SEP 2025