

APP CRS
012°

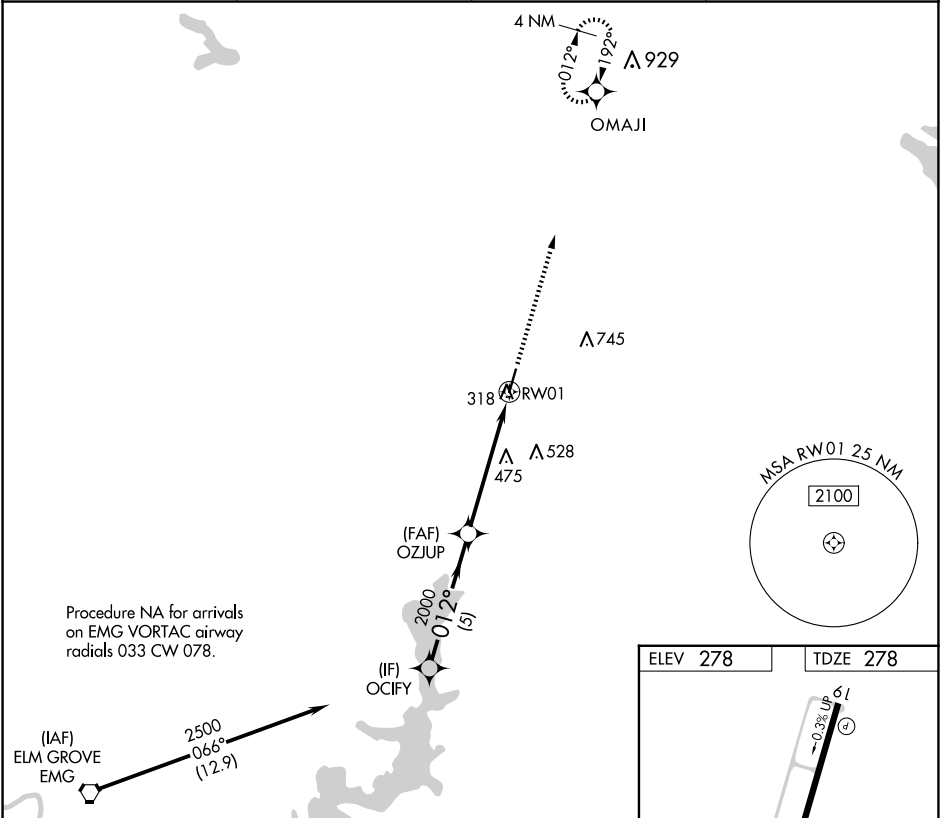
Rwy Idg
TDZE
Apt Elev
5004
278
278

RNAV (GPS) RWY 1
MINDEN (MNE)

⚠ When VGSi inop, procedure NA at night. DME/DME RNP-0.3 NA. Helicopter visibility reduction below 1 SM NA. When local altimeter setting not received, use Barksdale AFB altimeter setting; increase all MDA 80 feet, increase LNAV visibility Cats C/D ¾ SM and Circling visibility Cats C/D ½ SM.

MISSED APPROACH:
Climb to 2500 direct OMAJI and hold.

AWOS-3PT 119.325	SHREVEPORT APP CON 123.75 360.725	GCO 135.075	UNICOM 122.8 (CTAF) 1
----------------------------	---	-----------------------	--



OCIFY VGSi and descent angle not coincident (VGSi Angle 3.15/TCH 53).

2500 012° 2000 3.00° TCH 40 RWY 1

Procedure Turn NA

5 NM 5.3 NM

CATEGORY	A	B	C	D
LNAV MDA	780-1	502 (600-1)	780-1¾	502 (600-1¾)
CIRCLING	780-1 502 (600-1)	820-1 542 (600-1)	1060-2¼ 782 (800-2¼)	1060-2½ 782 (800-2½)

2500 OMAJI

5004 X 75 012°

MIRL Rwy 1-19 **1**

REIL Rwy 1 and 19

SC-4, 07 AUG 2025 to 04 SEP 2025

SC-4, 07 AUG 2025 to 04 SEP 2025