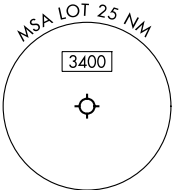


CHICAGO DEP CON
119.35 354.075
D-ATIS
126.675
GND CON
120.425
LEWIS TOWER ★
134.8 (CTAF)

TOP ALTITUDE:
3000

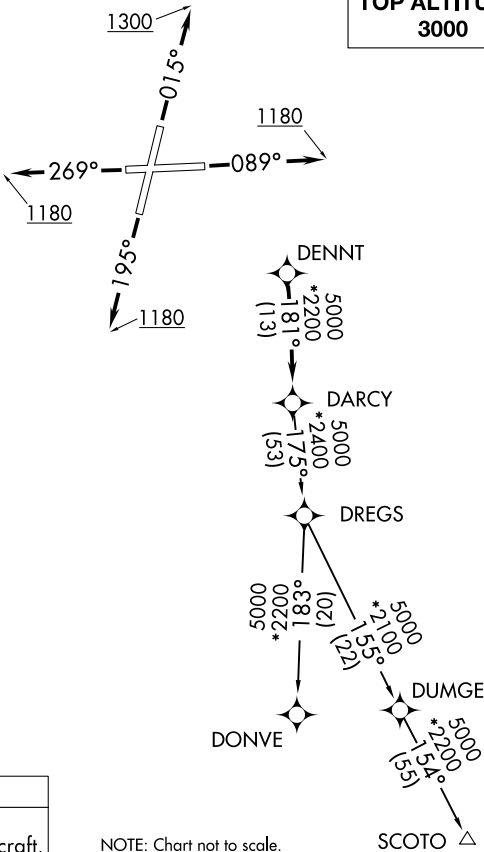
TAKEOFF MINIMUMS:
Rwys 9, 20, 27: Standard.
Rwy 2: Standard with minimum climb
of 420' per NM to 1200.

NOTE: Turbojet departures maintain 250K
until advised by ATC.



RNAV 1 - DME/DME/IRU or GPS.
RADAR required.
RADAR required for non-GPS equipped aircraft.

NOTE: Chart not to scale.



DEPARTURE ROUTE DESCRIPTION

TAKEOFF RUNWAY 2: Climb on heading 015° to 1300, then as assigned by ATC, for vectors to DENNT, thence. . . .
TAKEOFF RUNWAY 9: Climb on heading 089° to 1180, then as assigned by ATC, for vectors to DENNT, thence. . . .
TAKEOFF RUNWAY 20: Climb on heading 195° to 1180, then as assigned by ATC, for vectors to DENNT, thence. . . .
TAKEOFF RUNWAY 27: Climb on heading 269° to 1180, then as assigned by ATC, for vectors to DENNT, thence. . . .

. . . . on track 181° to DARCY, then on (transition), maintain 3000.
Expect filed altitude 10 minutes after departure.

DONVE TRANSITION (DARCY7.DONVE):
SCOTO TRANSITION (DARCY7.SCOTO):