

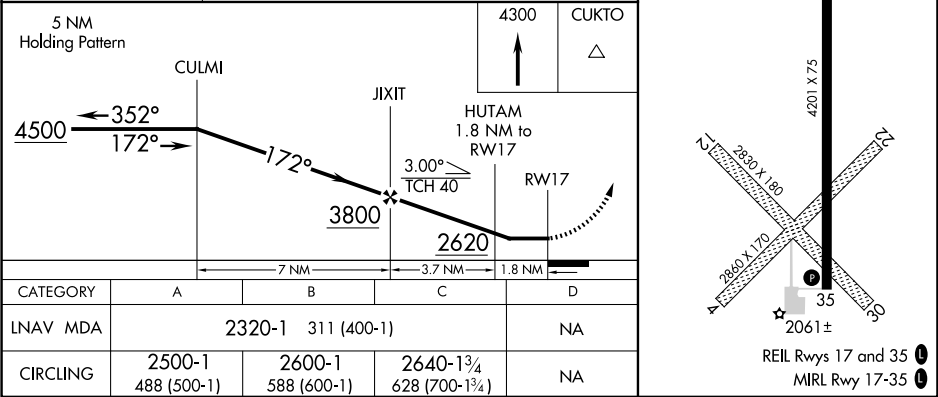
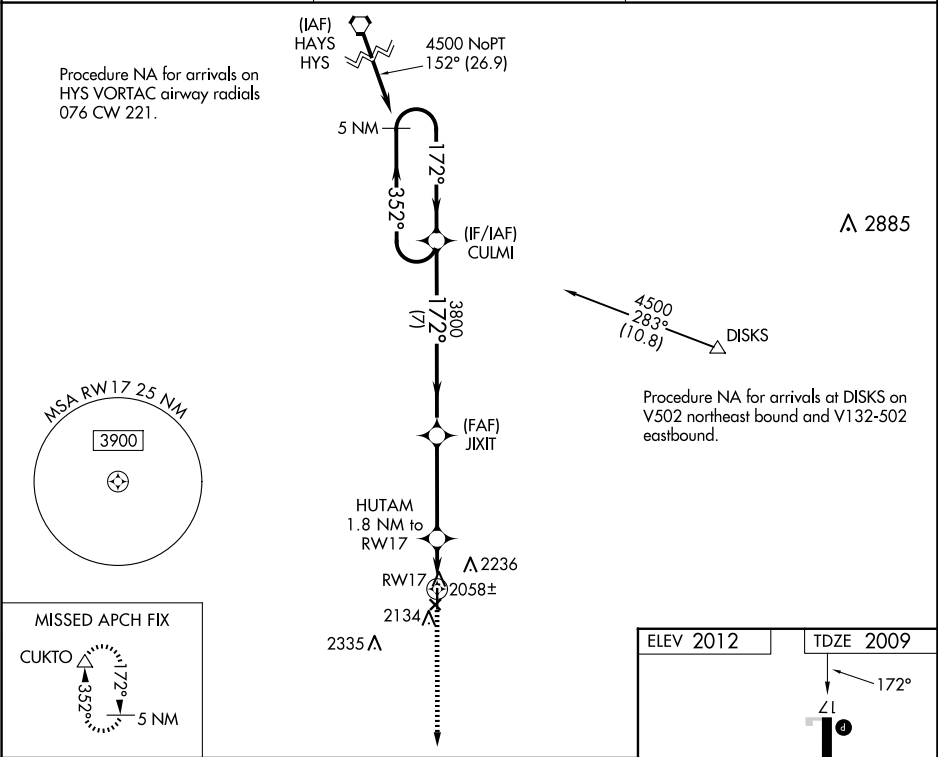
▼

▲

DME/DME RNP-0.3 NA. Procedure NA at night. Visibility reduction by helicopters NA. When local altimeter setting not received, use Great Bend altimeter setting: increase all MDA 60 feet and Circling Cat C visibility ¼ mile. Circling NA to Rwys 4, 12, 22 and 30.

MISSED APPROACH: Climb to 4300 direct CUKTO and hold.

AWOS-2 119.875	KANSAS CITY CENTER 124.4 322.4	UNICOM 122.8 (CTAF) 1
-------------------	-----------------------------------	--------------------------



NC-2, 07 AUG 2025 to 04 SEP 2025

NC-2, 07 AUG 2025 to 04 SEP 2025