

WAAS
CH **53332**
W13A

APP CRS
134°

Rwy Idg **4602**
TDZE **1130**
Apt Elev **1137**

RNAV (GPS) RWY 13

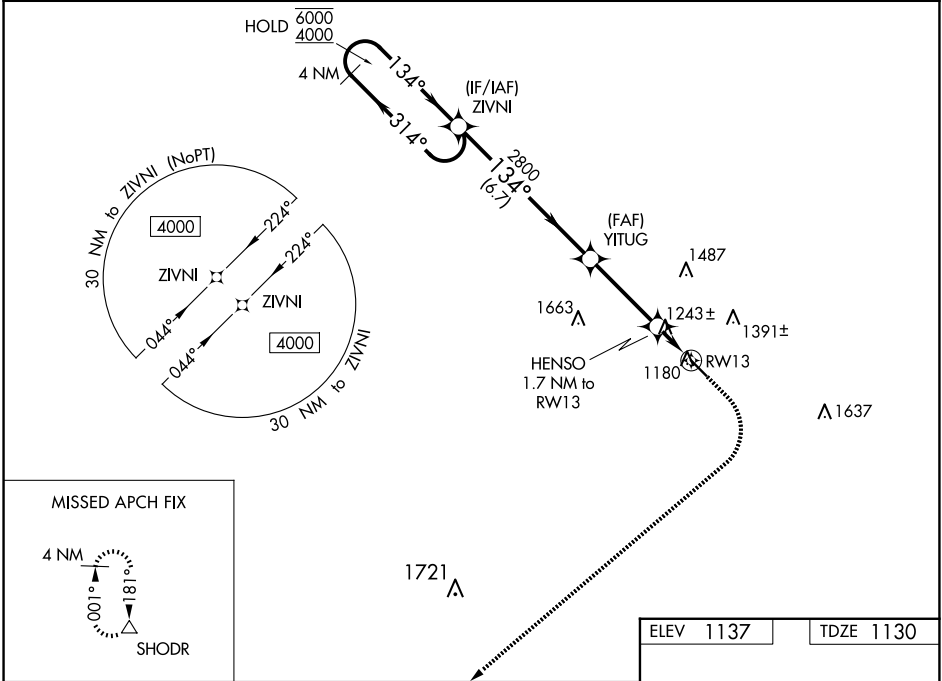
IOWA FALLS MUNI (IF A)

RNP APCH - GPS.

For uncompensated Baro-VNAV systems, LNAV/VNAV NA below -17°C or above 54°C. Circling Rwy 31 NA at night.

MISSED APPROACH: Climb to 1600 then climbing right turn to 4000 direct SHODR and hold.

AWOS-3 120.425	WATERLOO APP CON ★ 118.9	UNICOM 122.8 (CTAF) 0
--------------------------	------------------------------------	--



VGSI and RNAV glidepath not coincident (VGSI Angle 3.00/TCH 44).

4 NM Holding Pattern

6000
4000

314°

134°

GP 3.00°
TCH 40

ZIVNI

YITUG

2800

1700

6.7 NM

3.4 NM

0.7 NM

1 NM

1600

4000

SHODR

HENSO 1.7 NM to RWY13

1 NM to RWY13

RWY13

CATEGORY	A	B	C	D
LPV DA		1380-1	250 (300-1)	
LNAV/VNAV DA		1395-1	265 (300-1)	
LNAV MDA		1500-1	370 (400-1)	
CIRCLING	1540-1 403 (500-1)	1620-1 483 (500-1)	1760-1¾ 623 (700-1¾)	1800-2 663 (700-2)

ELEV 1137

TDZE 1130

134°

4602 X 75

31

MIRL Rwy 13-31 **0**

REIL Rws 13 and 31 **0**