

KETCHIKAN, ALASKA

AL-6053 (FAA)

24305

APP CRS <b>295°</b>	Rwy Idg TDZE Apt Elev	<b>N/A</b> <b>N/A</b> <b>92</b>
------------------------	-----------------------------	---------------------------------------

RNAV (GPS)-B  
KETCHIKAN INTL (KTN)(PAKT)

RNP APCH.

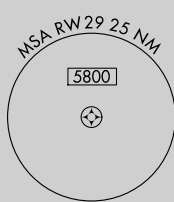
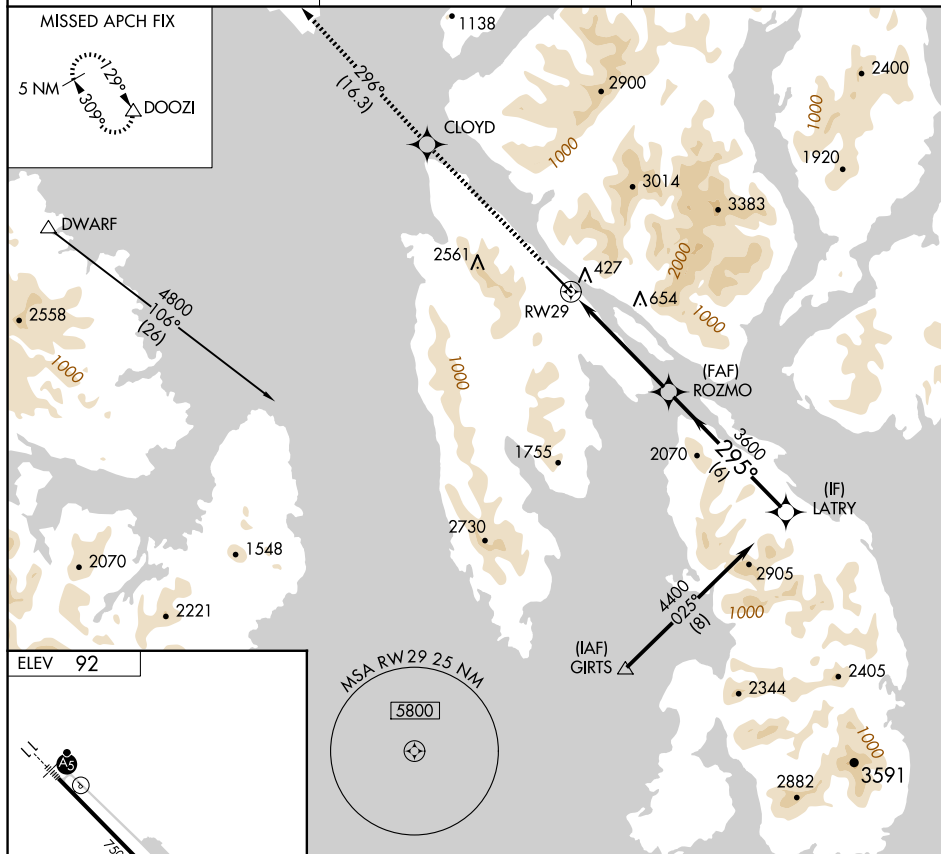


Circling NA northeast of Rwy 29-11.

MISSED APPROACH: Climb to 5000 direct CLOYD and on track 296° to DOOZI and hold.

AFIS <b>134.45</b>	ANCHORAGE CENTER <b>118.5 284.6</b>	KETCHIKAN RADIO <b>123.6 (CTAF) 0</b>
-----------------------	--	--

## MISSED APCH FIX



5000 ↑	CLOYD ✦	tr 296°	DOOZI △	<p>ROZMO</p> <p>LATRY</p> <p>4400</p> <p>295°</p> <p>3600</p> <p>6.49°</p> <p>TCH 49</p> <p>RW29</p> <p>5 NM</p> <p>6 NM</p>		
CATEGORY	A		B		C	D
<b>C</b> CIRCLING	1980-1¼ 1888 (1900-1¼)		2620-1½ 2528 (2600-1½)		2880-3	2788 (2800-3)

KETCHIKAN, ALASKA  
Amdt 1 13SEP18

KETCHIKAN INTL (KTN)(PAKT)  
RNAV (GPS)-B

55°21'N-131°43'W

AK, 07 AUG 2025 to 02 OCT 2025