

24305

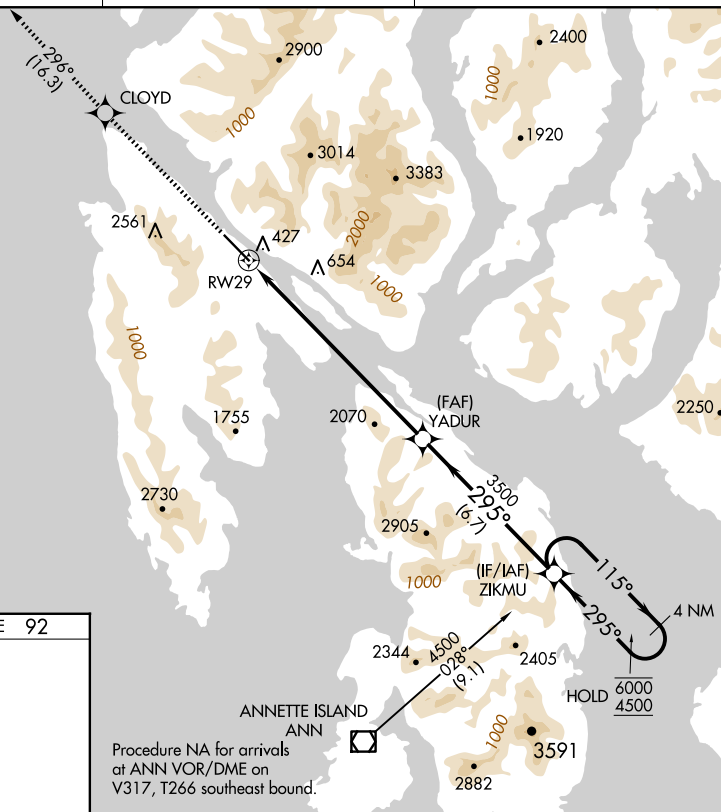
RNAV (GPS) RWY 29  
KETCHIKAN INTL (KTN)(PAKT)

**A**<sup>NA</sup> For inop ALS, increase all Cats visibility to 1¾ SM.

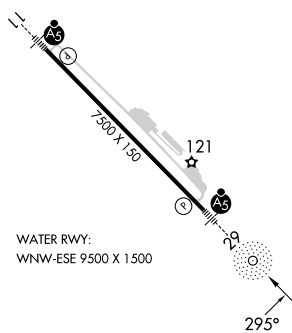


**MISSED APPROACH:** Climb to 5000 direct CLOYD and on track 296° to DOOZI and hold.  
**\*Missed approach requires minimum climb of 425 feet per NM to 2160; If unable to meet climb gradient, see RNAV (GPS)-B.**

KETCHIKAN RADIO  
**123.6 (CTAF) L**



TDZE 92



WATER RWY:  
WNW-ESE 9500 X 1500

HIRL Rwy 11-29 **L**

Orig 13SEP18

55°21'N-131°43'W

KETCHIKAN INTL (KTN)(PAKT)  
RNAV (GPS) RWY 29

AK, 07 AUG 2025 to 02 OCT 2025