

LOC/DME I-ECH

109.3

Chan 30

APP CRS

115°

Rwy ldg

7500

TDZE

92

Apt Elev

92

LOC X RWY 11

KETCHIKAN INTL (KTN)(PAKT)

DME required. ADF required.

MALSR

MISSED APPROACH: Climb to 5000 direct CMJ NDB then on CMJ NDB bearing 124° to UCARU/I-ECH 6.6 DME and on ANN VOR/DME R-338 to ANN VOR/DME and hold.

AFIS

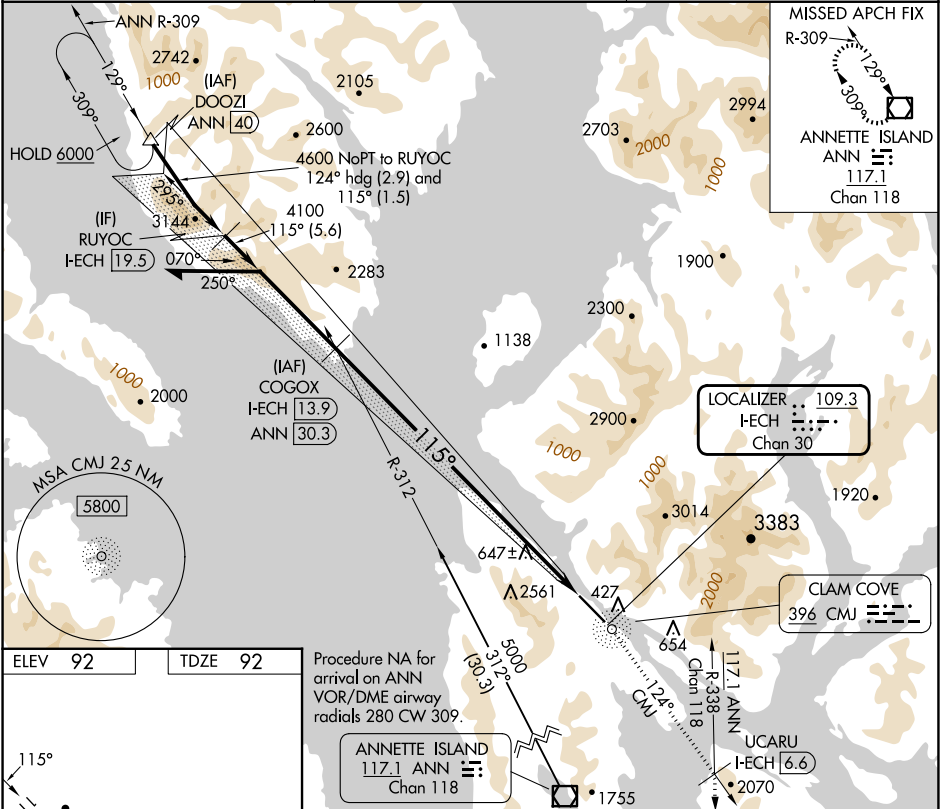
134.45

ANCHORAGE CENTER

118.5 284.6

KETCHIKAN RADIO

123.6 (CTAF) 0



ELEV 92

TDZE 92

Procedure NA for arrival on ANN VOR/DME airway radials 280 CW 309.

ANNETTE ISLAND 117.1 ANN Chan 118

WATER RWY: WNW-ESE 9500 X 1500

HIRL Rwy 11-29 0

Remain within 10 NM

COGOX I-ECH 13.9

4600

295°

115°

4100

Use I-ECH DME when on the localizer course.

3.00°

TCH 50

7.3 NM

5.2 NM

5000 CMJ

UCARU I-ECH 6.6

ANN R-338

ANN

CATEGORY	A	B	C	D
S-11	1780-1¼ 1688 (1700-1¼)	1780-1½ 1688 (1700-1½)	1780-3	1688 (1700-3)
CIRCLING	2100-1¼ 2008 (2100-1¼)	2640-1½ 2548 (2600-1½)	3020-3 2928 (3000-3)	3300-3 3208 (3300-3)