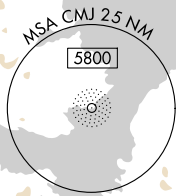





ILS Z or LOC Z RWY 11  
KETCHIKAN INTL (KTN)(PAKT)

ADF required. DME required.

MALSR

MISSED APPROACH: Climb to 5100 direct CMJ NDB and on CMJ NDB bearing 124° to UCARU/I-ECB 6.6 DME and on ANNN VOR/DME R-338 to ANNN VOR/DME and hold, continue to climb-in-hold to 5100.  
 \*Missed approach requires minimum climb of 305 feet per NM to 4000;  
 if unable to meet climb gradient, see LOC X RWY 11.  
 \*Missed approach requires minimum climb of 235 feet per NM to 4000;  
 if unable to meet climb gradient, see LOC X RWY 11.

KETCHIKAN RADIO

5100 ↑	CMJ 	CMJ 124°	UCARU I-ECH 	ANN R-338	ANN 
-----------	--	-------------	---	--------------	--

AK. 07 AUG 2025 to 02 OCT 2025