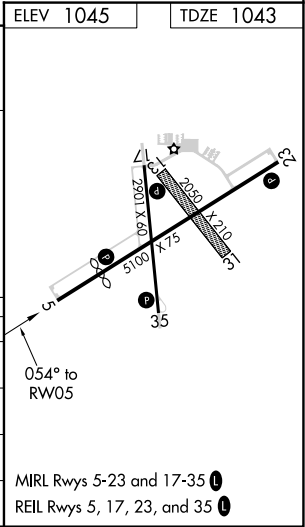
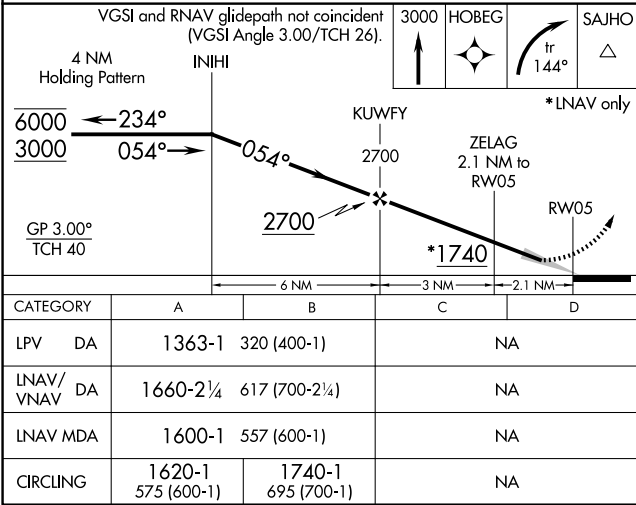
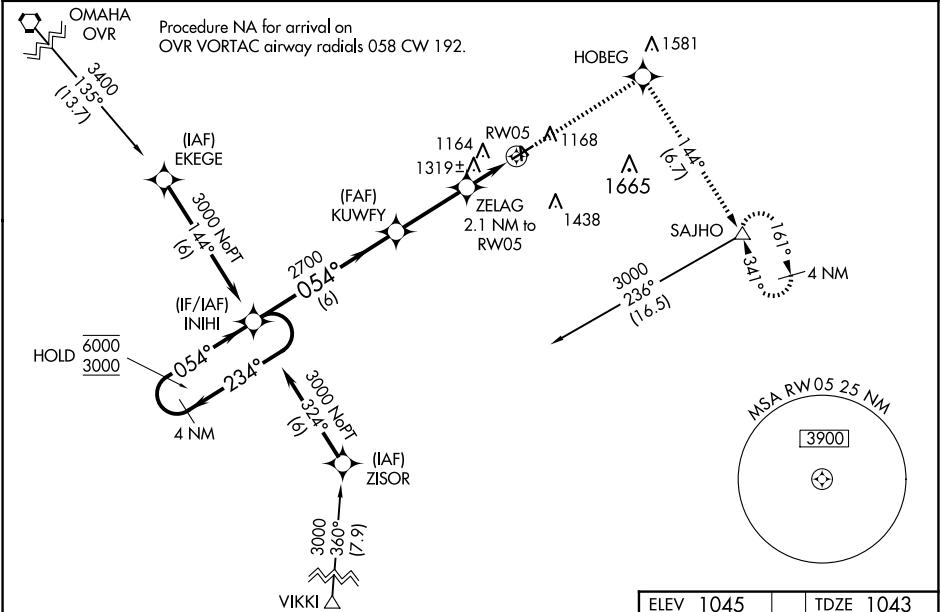


WAAS CH 42927 W05A	APP CRS 054°	Rwy Idg TDZE 1043 Apt Elev 1045
--	------------------------	---

RNAV (GPS) RWY 5
RED OAK MUNI (RDK)

RNP APCH		MISSED APPROACH: Climb to 3000 direct HOBEG and right turn on track 144° to SAJHO and hold.
T A Circling NA to Rwy's 13 and 31. For uncompensated Baro-VNAV systems, LNAV/VNAV NA below -17° C or above 54° C.		
AWOS-3P 123.925	OMAHA APP CON 124.5 263.0	UNICOM 122.8 (CTAF) 0



NC-3, 07 AUG 2025 to 04 SEP 2025

NC-3, 07 AUG 2025 to 04 SEP 2025