

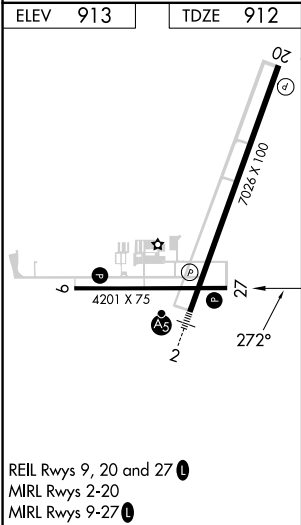
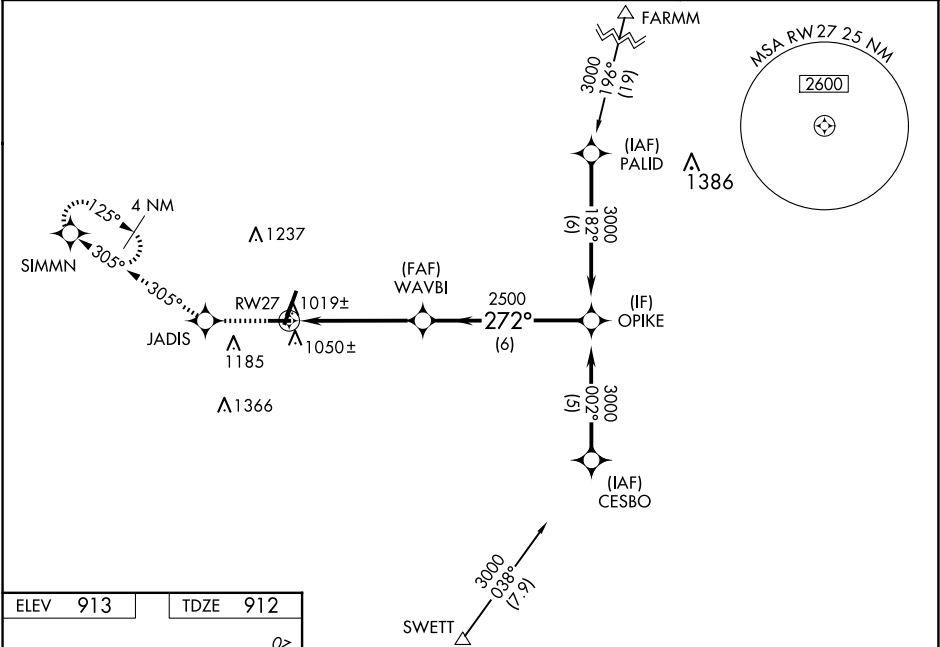
WAAS CH <b>72709</b> <b>W27A</b>	APP CRS <b>272°</b>	Rwy Idg TDZE <b>912</b> Apt Elev <b>913</b>	<b>4201</b>
--	------------------------	---	-------------

RNAV (GPS) RWY 27  
DE KALB TAYLOR MUNI (DKB)

When local altimeter setting not received, use Aurora altimeter setting and increase all DA 61 feet and all MDA 80 feet; increase all LPV and LNAV/VNAV visibilities, LNAV C/D visibility, and Circling C/D visibility ¼ mile. Baro-VNAV NA when using Aurora altimeter setting. VDP NA when using Aurora altimeter setting. For uncompensated Baro-VNAV systems, LNAV/VNAV NA below -16° C (4°F) or above 47° C (116° F). DME/DME RNP-0.3 NA.

MISSED APPROACH: Climb to 3000 direct JADIS and via 305° track to SIMMN and hold.

AWOS-3 <b>119.075</b>	CHICAGO APP CON <b>133.5 349.0</b>	UNICOM <b>122.7 (CTAF) 0</b>
--------------------------	---------------------------------------	---------------------------------



ELEV 913	TDZE 912	VGSI and RNAV glidepath not coincident (VGSI Angle 3.00/TCH 24).			
3000	JADIS	305° tr	SIMMN	OPIKE	Procedure Turn NA
*LNAV only.					
*1.3 NM to RW27					
GP 3.00° TCH 45					
1.3 NM 3.4 NM 6 NM					
CATEGORY	A	B	C	D	
LPV DA	1162-3/4 250 (300-3/4)				
LNAV/VNAV DA	1317-1 1/2 405 (500-1 1/2)				
LNAV MDA	1360-1 448 (500-1)	1360-1 1/4 448 (500-1 1/4)	1360-1 1/2 448 (500-1 1/2)		
CIRCLING	1360-1 447 (500-1)	1500-1 587 (600-1)	1600-2 687 (700-2)	1740-2 3/4 827 (900-2 3/4)	