

WAAS CH 58109 W02A	APP CRS 021°	Rwy Idg TDZE 913 Apt Elev 913	7026 913
--	------------------------	---	---------------------------

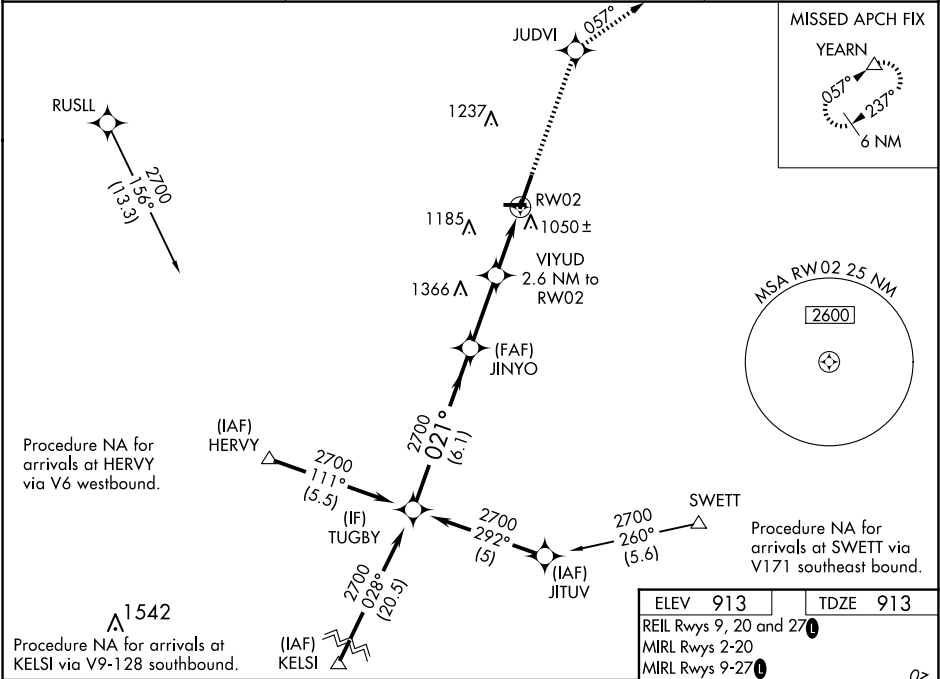
RNAV (GPS) RWY 2
DE KALB TAYLOR MUNI (DKB)

▼ Baro-VNAV NA when using Aurora altimeter setting. For uncompensated Baro-VNAV systems, LNAV/VNAV NA below -16°C (4°F) or above 47°C (116°F). DME/DME RNP-0.3 NA. VDP NA when using Aurora altimeter setting. When local altimeter setting not received, use Aurora altimeter setting and increase all DA 61 feet and all MDA 80 feet; increase all LPV and LNAV/VNAV visibilities, LNAV Cats C/D visibility, and Circling Cats C/D visibility ¼ mile. For inop MALSR, increase LPV all Cats visibility to 1.

MALSR

MISSED APPROACH:
Climb to 3000 direct
JUDVI and via 057°
track to YEARN and
hold.

AWOS-3 119.075	CHICAGO APP CON 133.5 349.0	UNICOM 122.7 (CTAF) 0
--------------------------	---------------------------------------	---------------------------------



Procedure Turn NA				
VGSi and RNAV glidepath not coincident (VGSi Angle 3.00/TCH 53).				
TUGBY	JINYO	VYUD	JUDVI	YEARN
2700	2700	2700	3000	tr 057°
GP 3.00° TCH 55				△
*LNAV only.				
*1.2 NM to RW02				
*1800				
6.1 NM 2.8 NM 1.4 NM 1.2 NM				
CATEGORY	A	B	C	D
LPV DA	1207-½		294 (300-½)	
LNAV/VNAV DA	1360-1		447 (500-1)	
LNAV MDA	1360-½	447 (500-½)	1360-¾ 447 (500-¾)	1360-1 447 (500-1)
CIRCLING	1360-1 447 (500-1)	1500-1 587 (600-1)	1600-2 687 (700-2)	1740-2¾ 827 (900-2¾)

