

APP CRS	Rwy Ldg	7913
246°	TDZE	7
	Apt Elev	7

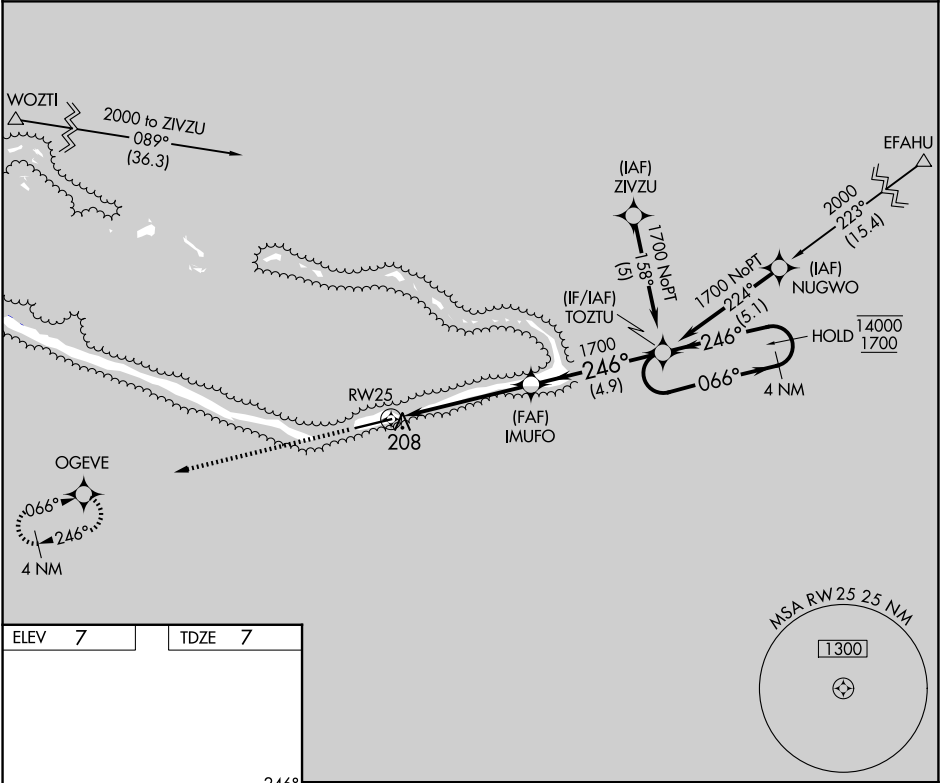
RNAV (GPS) RWY 25  
AMATA KABUA INTL (MAJ)(PKMJ)

RNP APCH-GPS.

Rwy 25 helicopter visibility reduction below ¾ SM NA.  
Obtain local altimeter setting on CTAF; when not received,  
procedure NA. Uncontrolled airspace below 5500.

MISSED APPROACH: Climb to 1700 direct OGEVE and hold.

MAJURO RADIO  
123.6 (CTAF) 0



ELEV 7

TDZE 7

MIRL Rwy 7-25 0

REIL Rwy 7 and 25 0

1700	OGEVE	VGSI and RNAV glidepath not coincident (VGSI Angle 3.00/TCH 45).			
		IMUFO	TOZTU	4 NM Holding Pattern	
		1.3 NM to RW25	1700	246°	066° 14000
		≤ 3.00° TCH 54		← 246°	1700
		1.3	3.9 NM	4.9 NM	
CATEGORY	A	B	C	D	
LNAV MDA	460-1	453 (500-1)	460-1⅔	453 (500-1⅔)	
CIRCLING	520-1	513 (600-1)	520-1½ 513 (600-1½)	560-2 553 (600-2)	