

NDB/DME MAJ

316

APP CRS

062°

Rwy Ldg TDZE

79137

Chan

114 (116.7)

Apt Elev

7

NDB RWY 7

AMATA KABUA INTL (MAJ)(PKMJ)

V

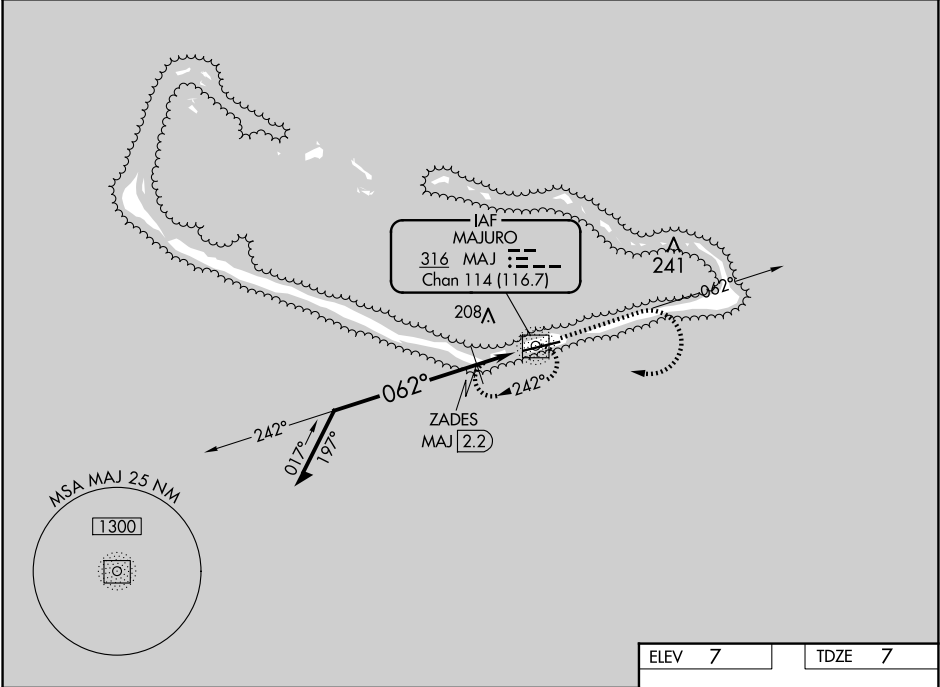
NA

Rwy 7 helicopter visibility reduction below ¾ SM NA. Obtain local altimeter setting on CTAF; when not received, procedure NA. Uncontrolled airspace below 5500.

MISSED APPROACH: Climb to 1000 on MAJ NDB/DME bearing 062° then climbing right turn to 1300 direct MAJ NDB/DME and hold.

MAJURO RADIO

123.6 (CTAF) 0



Remain within 10 NM

1300

242°

062°

600

2.2 NM

MAJ NDB/DME

1000

1300

MAJ

MAJ 062°

242°

2.91°

TCH 55

2.2 NM

MAJ 2.2

25163

7913 X 150

062°

MIRL Rwy 7-25 0

REIL Rws 7 and 25 0

CATEGORY	A	B	C	D
S-7	600-1	593 (600-1)	600-1¾	593 (600-1¾)
CIRCLING	600-1	593 (600-1)	600-1¾ 593 (600-1¾)	600-2 593 (600-2)
ZADES FIX MINIMUMS (DME REQUIRED)				
S-7	520-1	513 (600-1)	520-1⅜	513 (600-1⅜)
CIRCLING	520-1	513 (600-1)	520-1½ 513 (600-1½)	560-2 553 (600-2)

PAC, 07 AUG 2025 to 02 OCT 2025

PAC, 07 AUG 2025 to 02 OCT 2025