

APP CRS <b>071°</b>	Rwy Ldg	<b>6000</b>
	TDZE	<b>91</b>
	Apt Elev	<b>91</b>

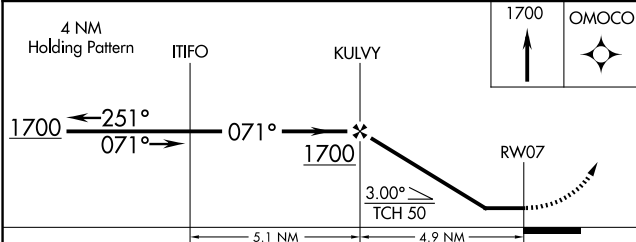
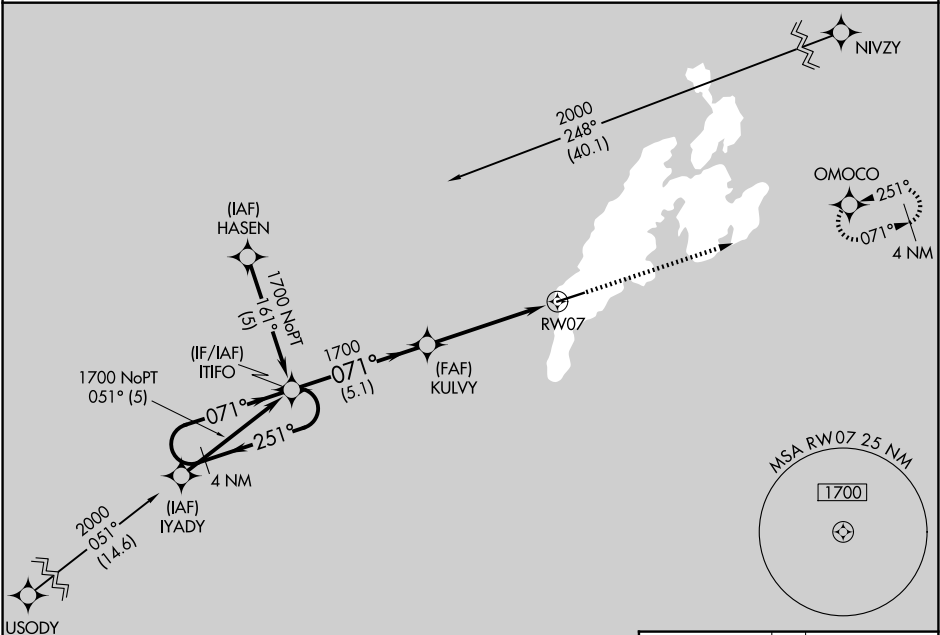
RNAV (GPS) RWY 7

YAP INTL (T11)(PTYA)

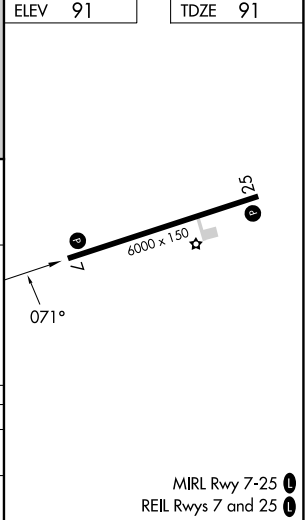
**▽** Obtain local altimeter setting on CTAF; when not received, procedure not authorized.  
Circling NA North of Rwy 7-25. DME/DME RNP-0.3 NA.  
No controlled airspace below 5500'.

MISSED APPROACH: Climb to 1700 direct  
OMOCO WP and hold.

YAP RADIO  
**123.6 0** (CTAF)



CATEGORY	A	B	C	D
LNAV MDA	600-1	509 (600-1)	600-1½	509 (600-1½)
CIRCLING	600-1	509 (600-1)	600-1½ 509 (600-1½)	660-2 569 (600-2)



PAC, 07 AUG 2025 to 02 OCT 2025

PAC, 07 AUG 2025 to 02 OCT 2025