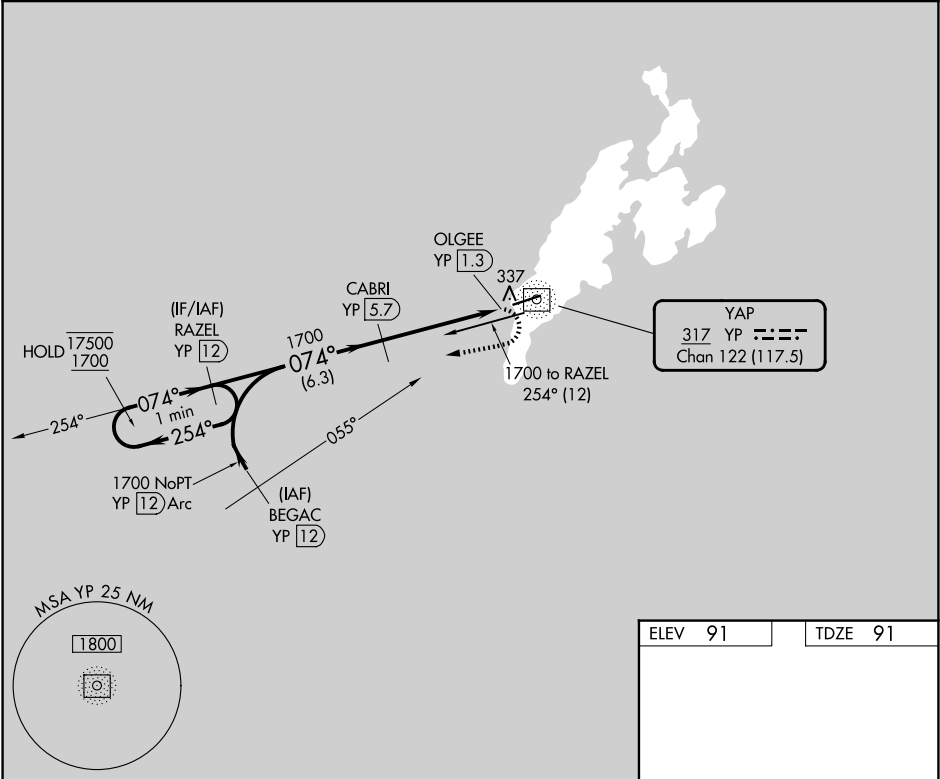


NDB/DME YP 317 Chan 122 (117.5)	APP CRS 074°	Rwy Ldg 6000 TDZE 91 Apt Elev 91
---	------------------------	---

NDB/DME RWY 7
YAP INTL (T11)(PTYA)

<p>▼ Circling NA north of Rwy 7-25. Rwy 7 helicopter visibility reduction below ¾ SM NA. GPS required for procedure entry at BEGAC. No controlled airspace below 5500.</p>	<p>MISSED APPROACH: Climbing right turn to 1700 on 254° bearing from YP NDB/DME to RAZEL/12 DME and hold.</p>
---	---

YAP RADIO
123.60 (CTAF)



VGSI and descent angles not coincident (VGSI Angle 3.00/TCH 47).

One Minute Holding Pattern	RAZEL YP 12	CABRI YP 5.7	YP 2.4	YP NDB/DME
17500 ← 254°	074° →	1700	3.03°	074°
1700			TCH 50	
	6.3 NM	3.3 NM	1.1 NM	0.5
CATEGORY	A	B	C	D
S-7	640-1	549 (600-1)	640-1 5/8	549 (600-1 5/8)
CIRCLING	640-1	549 (600-1)	640-1 5/8	660-2
			549 (600-1 5/8)	569 (600-2)

