

NDB/DME YP	APP CRS	Rwy Ldg	6000
317	237°	TDZE	90
Chan 122 (117.5)		Apt Elev	91

NDB/DME RWY 25

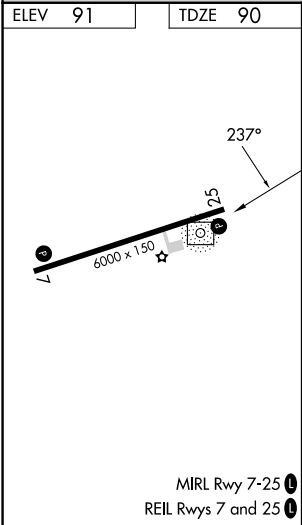
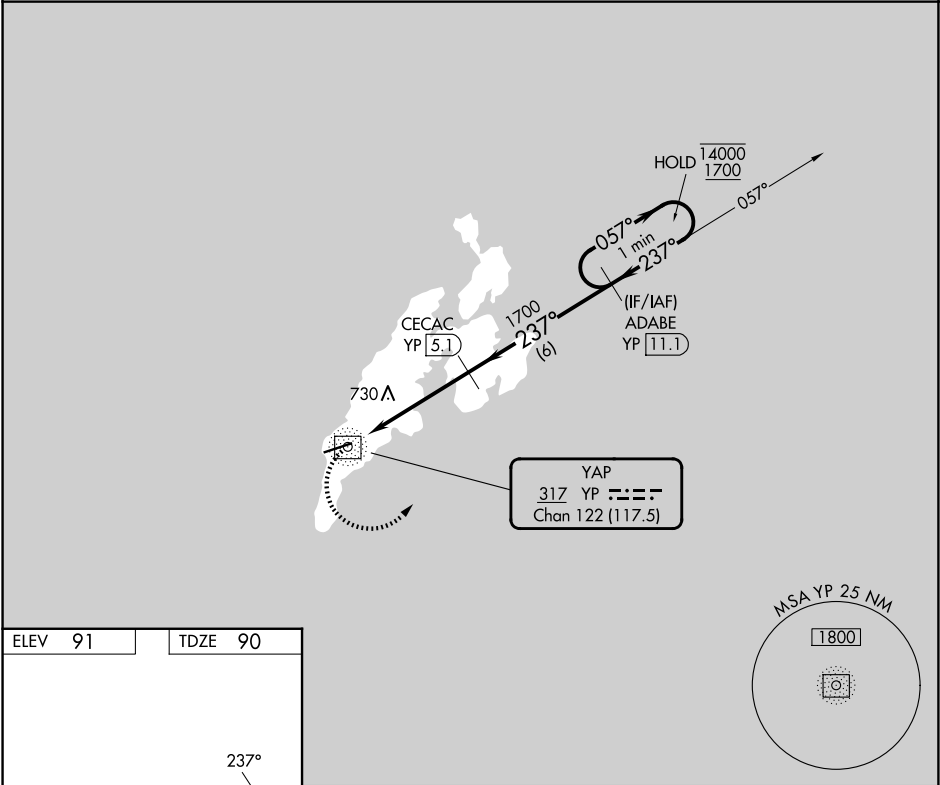
YAP INTL (T11)(PTYA)

Circling NA north of Rwy 7-25.
No controlled airspace below 5500.

MISSED APPROACH: Climbing left turn to 1800 on 057° bearing from YP NDB/DME to ADABE/11.1 DME and hold.

YAP RADIO

123.6 (CTAF)



	1800 YP 057°	ADABE YP 11.1	CECAC YP 5.1	ADABE YP 11.1	One Minute Holding Pattern
	YP NDB/DME	YP 3			
	2.8 NM	2.1 NM	6 NM		
CATEGORY	A	B	C	D	
S-25	1040-1¼ 950 (1000-1¼)	1040-1½ 950 (1000-1½)	1040-3	950 (1000-3)	
CIRCLING	1040-1¼ 949 (1000-1¼)	1040-1½ 949 (1000-1½)	1040-3	949 (1000-3)	

PAC, 07 AUG 2025 to 02 OCT 2025

PAC, 07 AUG 2025 to 02 OCT 2025