

APP CRS
220°

Rwy Ldg
TDZE
979

Apt Elev
980

RNAV (GPS) RWY 23

FAYETTE COUNTY (I23)

RNP APCH - GPS.

▼

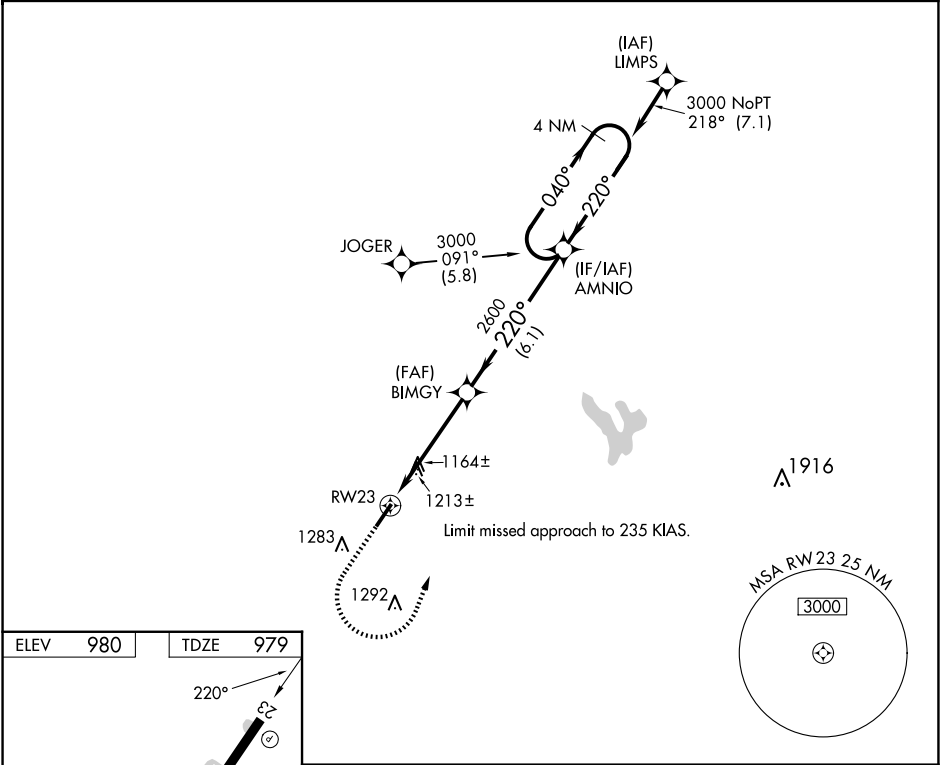
Δ

NA

Rwy 23 helicopter visibility reduction below 1 SM NA. When local altimeter setting not received, use Wilmington Air Park altimeter setting and increase all MDA 60 feet. Increase LNAV Cat C/D visibility ½ mile and Circling Cat C visibility ¼ mile. Procedure NA at night.

MISSED APPROACH: Climb to 1700 then climbing left turn to 3000 direct AMNIO and hold.

AWOS-3 118.775	COLUMBUS APP CON 134.0 279.6	UNICOM 122.8 (CTAF) 0
--------------------------	--	---------------------------------



ELEV **980** TDZE **979**

220°

23

REIL Rwy 23 0

MIRL Rwy 5-23 0

1700

3000

AMNIO

VGSI and descent angles not coincident (VGSI Angle 3.00/TCH 26).

AMNIO

4 NM Holding Pattern

BIMGY

2600

3.00° TCH 40

RWY 23

5 NM

6.1 NM

CATEGORY	A	B	C	D
LNAV MDA	1540-1	561 (600-1)	1540-1½	561 (600-1½)
CIRCLING	1580-1 600 (600-1)	1640-1 660 (700-1)	1640-1¾ 660 (700-1¾)	1660-2¼ 680 (700-2¼)

EC-2, 07 AUG 2025 to 04 SEP 2025

EC-2, 07 AUG 2025 to 04 SEP 2025