

NDB CSS	APP CRS	Rwy Ldg	5097
414	223°	TDZE	979
		Apt Elev	980

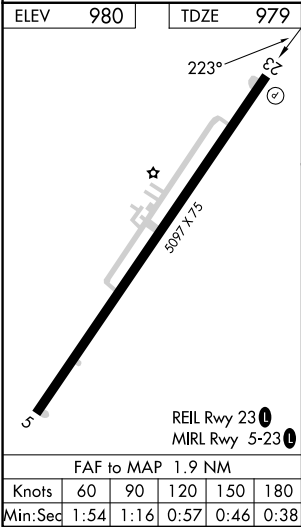
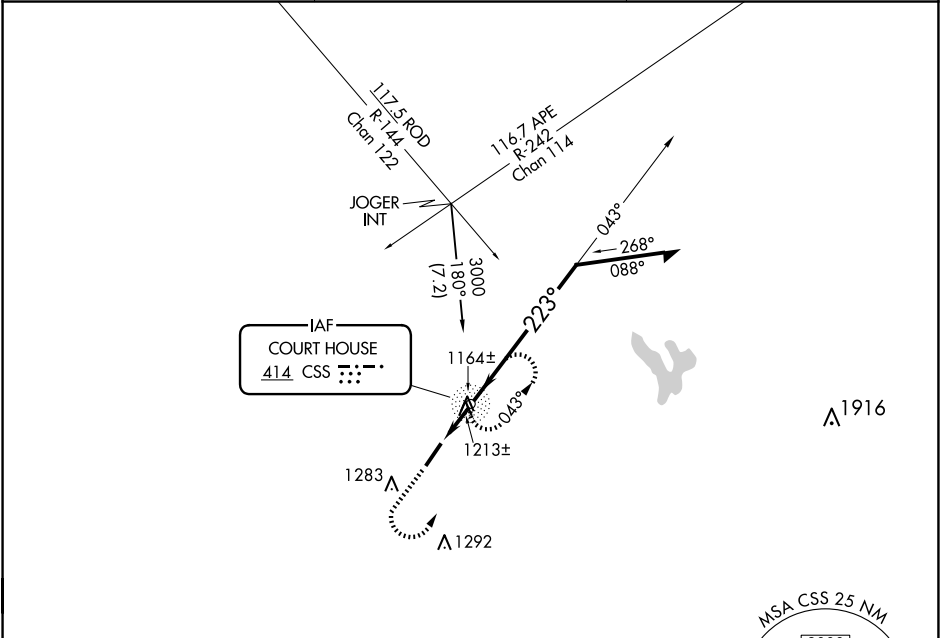
NDB RWY 23


FAYETTE COUNTY (I23)

When local altimeter setting not received, use Wilmington Air Park altimeter setting and increase all MDAs 60 feet, and Circling visibility Cat C ¼ SM. Procedure NA at night. Rwy 23 helicopter visibility reduction below 1 SM NA.

MISSED APPROACH: Climb to 2000, then climbing left turn to 2600 direct CSS NDB and hold.

AWOS-3 118.775	COLUMBUS APP CON 134.0 279.6	UNICOM 122.8 (CTAF) 0
-------------------	---------------------------------	--------------------------



<div>2000</div> <div>2600</div> <div>CSS</div>				<div>CSS NDB</div> <div>043°</div> <div>Remain within 10 NM</div>	
VGSI and descent angles not coincident (VGSI Angle 3.00/TCH 26).				<div>2600</div>	
<div>≤3.48°</div> <div>TCH 40</div>				<div>223°</div> <div>1700</div>	
<div>1.9 NM</div>					
CATEGORY	A	B	C	D	
S-23	1580-1 601 (600-1)		1580-1¾ 601 (600-1¾)	1580-2 601 (600-2)	
 CIRCLING	1580-1 600 (600-1)	1640-1 660 (700-1)	1640-1¾ 660 (700-1¾)	1660-2¼ 680 (700-2¼)	