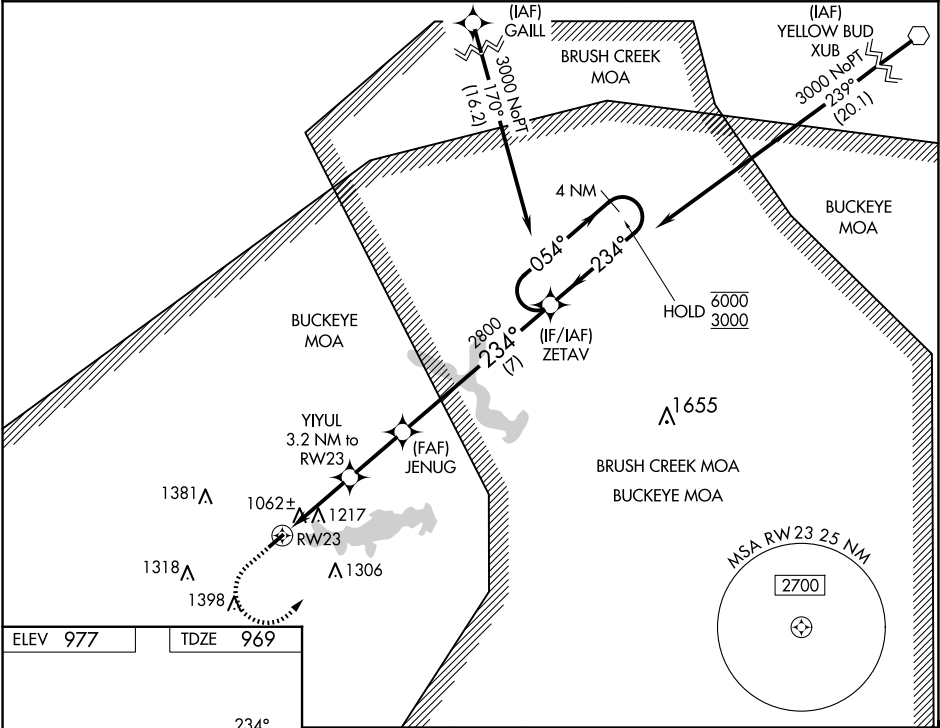


WAAS CH 97630 W23A	APP CRS 234°	Rwy Ldg TDZE 969 Apt Elev 977
--	------------------------	---

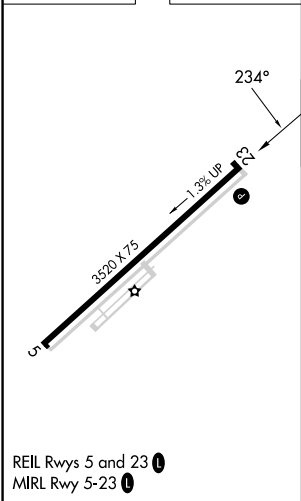
RNAV (GPS) RWY 23
HIGHLAND COUNTY (HOC)

RNP APCH - GPS.	Procedure NA at night. Rwy 23 helicopter visibility reduction below 1 SM NA. When local altimeter setting not received, use Wilmington Air Park altimeter setting: increase all MDA 60 feet; increase LNAV Cats C and D visibility ¼ SM, increase LP Cats C and D visibility ½ SM, and increase Circling Cats C and D visibility ¼ SM.	MISSED APPROACH: Climb to 1600 then climbing left turn to 3000 direct ZETAV and hold.
-----------------	--	---

AWOS-3 118.175	INDIANAPOLIS CENTER 135.575 290.5	UNICOM 123.05 (CTAF)
--------------------------	---	--------------------------------



ELEV 977	TDZE 969
-----------------	-----------------



1600	3000	ZETAV	VGSI and descent angles not coincident (VGSI Angle 4.00/TCH 32).	4 NM Holding Pattern
YIYUL 3.2 NM to RW23	JENUG	054° 6000	234° 3000	
RW23	3.00° TCH 55	2800		
3.2 NM	2.5 NM	7 NM		
CATEGORY	A	B	C	D
LP MDA	1320-1 351 (400-1)			
LNAV MDA	1480-1 511 (600-1)		1480-1 511 (600-1 1/8)	
CIRCLING	1500-1 523 (600-1)	1520-1 543 (600-1)	1700-2 723 (800-2)	1700-2 723 (800-2 1/4)

EC-2, 07 AUG 2025 to 04 SEP 2025

EC-2, 07 AUG 2025 to 04 SEP 2025