

WAAS CH 70541 W28A	APP CRS 276°	Rwy Idg TDZE Apt Elev	4201 1090 1090
--	------------------------	-----------------------------	---

RNAV (GPS) RWY 28

NEW CASTLE HENRY COUNTY MARLATT FLD (UWL)

RNP APCH - GPS.

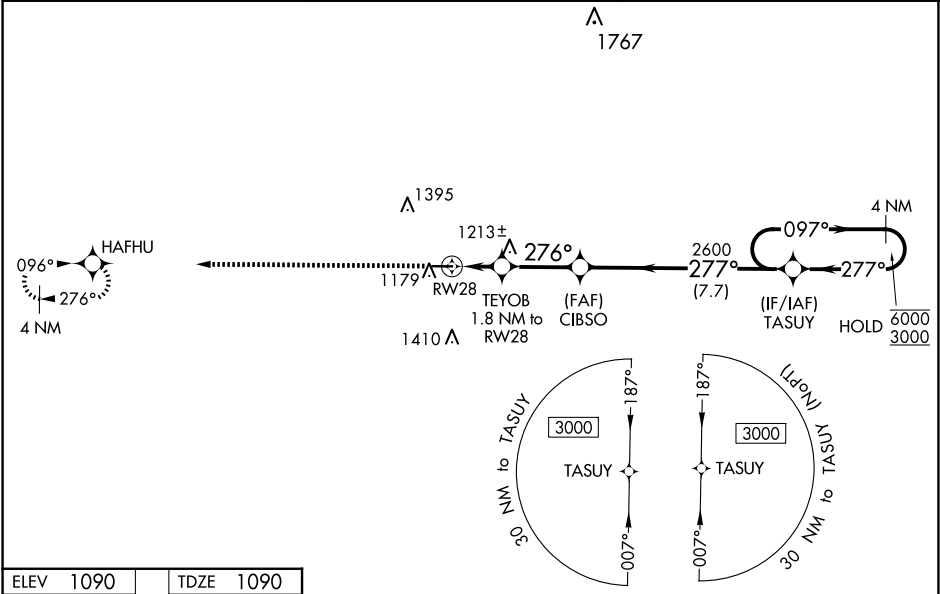
▼

⚠

Rwy 28 helicopter visibility reduction below ¾ SM NA. For uncompensated Baro-VNAV systems, LNAV/VNAV NA below -17°C or above 54°C. Baro-VNAV and VDP NA when using AID altimeter setting. When local altimeter setting not received, use Anderson altimeter setting; increase LPV DA to 1412 feet; increase LNAV/VNAV DA to 1437 feet; increase all MDAs 80 feet, LNAV visibility Cat C/D ¾ SM, and Circling visibility Cat C/D ¼ SM.

MISSED APPROACH:
Climb to 3000 direct HAFHU and hold.

AWOS-3 132.375	INDIANAPOLIS APP CON 135.45 317.8	UNICOM 123.05 (CTAF) 0
--------------------------	---	----------------------------------



ELEV 1090 TDZE 1090

3000 HAFHU

VGSI and RNAV glidepath not coincident (VGSI Angle 3.00/TCH 44).

4 NM Holding Pattern

TEYOB 1.8 NM to RW28

CIBSO 2600

TASUY

097° 6000

277° 3000

GP 3.00° TCH 44

1 NM to RW28

1700

2600

276°

277°

2600

1 NM

0.8

2.8 NM

7.7 NM

CATEGORY	A	B	C	D
LPV DA	1343-1 253 (300-1)			
LNAV/VNAV DA	1368-1 278 (300-1)			
LNAV MDA	1480-1 390 (400-1)			
CIRCLING	1520-1 430 (500-1)	1540-1 450 (500-1)	1720-1¾ 630 (700-1¾)	1720-2 630 (700-2)