

WAAS CH 82041 W10A	APP CRS 096°	Rwy Idg TDZE 1089 Apt Elev 1090
--	------------------------	---

RNAV (GPS) RWY 10

NEW CASTLE HENRY COUNTY MARLATT FLD (UWL)

RNP APCH - GPS.

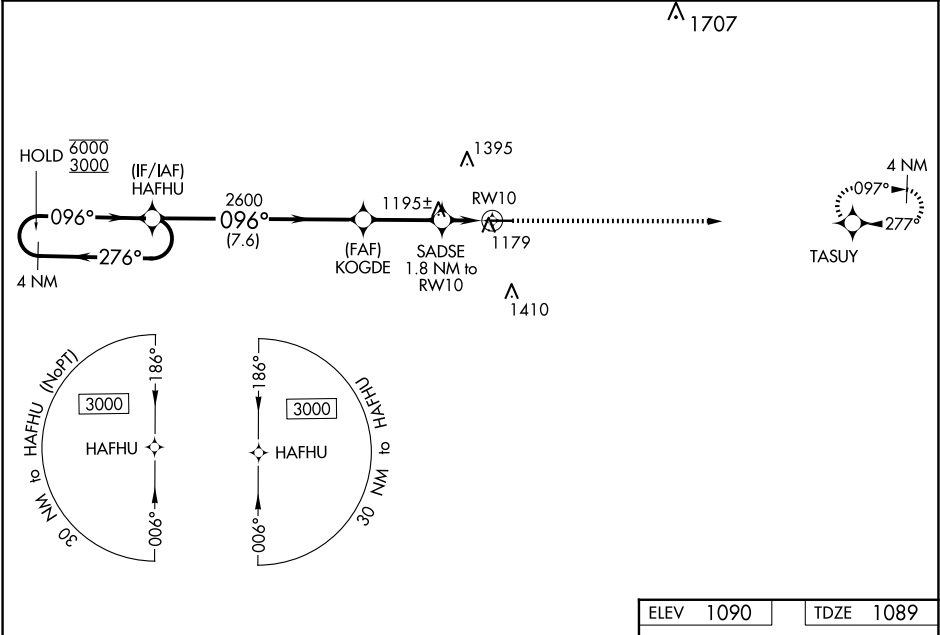
▼

⚠

Rwy 10 helicopter visibility reduction below $\frac{3}{4}$ SM NA. For uncompensated Baro-VNAV systems, LNAV/VNAV NA below -17°C or above 54°C. Baro-VNAV and VDP NA when using AID altimeter setting. When local altimeter setting not received, use Anderson altimeter setting; increase LPV DA to 1408 feet; increase LNAV/VNAV DA to 1424 feet; increase all MDAs 80 feet, LNAV visibility Cat C/D $\frac{3}{4}$ SM, and Circling visibility Cat C/D $\frac{1}{4}$ SM.

MISSED APPROACH:
Climb to 3000 direct
TASUY and hold.

AWOS-3 132.375	INDIANAPOLIS APP CON 135.45 317.8	UNICOM 123.05 (CTAF) 0
--------------------------	---	----------------------------------



<div>4 NM Holding Pattern HAFHU</div> <div>GP 3.00° TCH 46</div> <div>VGSI and RNAV glidepath not coincident (VGSI Angle 3.00/TCH 46).</div> <div>3000</div> <div>TASUY</div>				<div>6000 ← 276°</div> <div>3000 → 096°</div> <div>096°</div> <div>2600</div> <div>1680</div> <div>2600</div> <div>2600</div> <div>1.8 NM to RW10</div> <div>1.1 NM to RW10</div> <div>RW10</div> <div>7.6 NM</div> <div>2.8 NM</div> <div>0.8 NM</div> <div>1.1 NM</div>
CATEGORY	A	B	C	D
LPV DA	1339-1 250 (300-1)			
LNAV/VNAV DA	1355-1 266 (300-1)			
LNAV MDA	1460-1 371 (400-1)			
CIRCLING	1520-1 430 (500-1)	1540-1 450 (500-1)	1720-1¾ 630 (700-1¾)	1720-2 630 (700-2)
MIRL Rwy 10-28				
REIL Rwy 10 and 28				