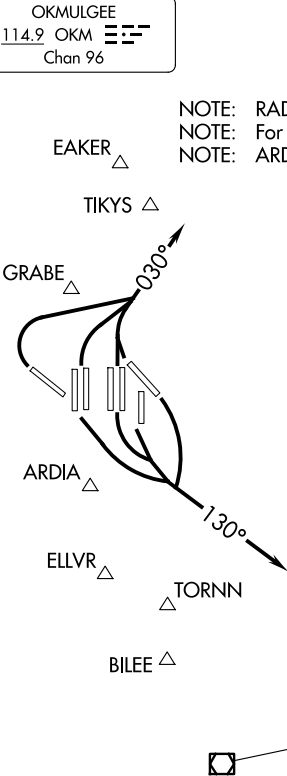


LONE STAR DEP CON
124.3 282.275 (NORTH)
125.2 343.65 (SOUTH)
D-ATIS DEP
135.925
CLNC DEL
128.25
CPDLC
GND CON
121.65 121.8 (EAST)
121.85 (WEST)
DFW TOWER
126.55 127.5 (EAST)
124.15 134.9 (WEST)

TOP ALTITUDE:
2000



TAKEOFF MINIMUMS

Rwy 35R: NA-ATC.
Rwys 13L/R, 17L/C/R, 18L/R, 31L/R, 35L/C, 36L/R: Standard.

NOTE: Chart not to scale.



DEPARTURE ROUTE DESCRIPTION

TAKEOFF RUNWAYS 13L/R, 17L/C/R, 18L/R: Climb on heading 130° for RADAR vectors to appropriate fix, thence. . . .
TAKEOFF RUNWAYS 31L/R, 35L/C, 36L/R: Climb on heading 030° for RADAR vectors to appropriate fix, thence. . . .

. . . .maintain 2000 or as assigned by ATC, expect filed altitude 10 minutes after departure.