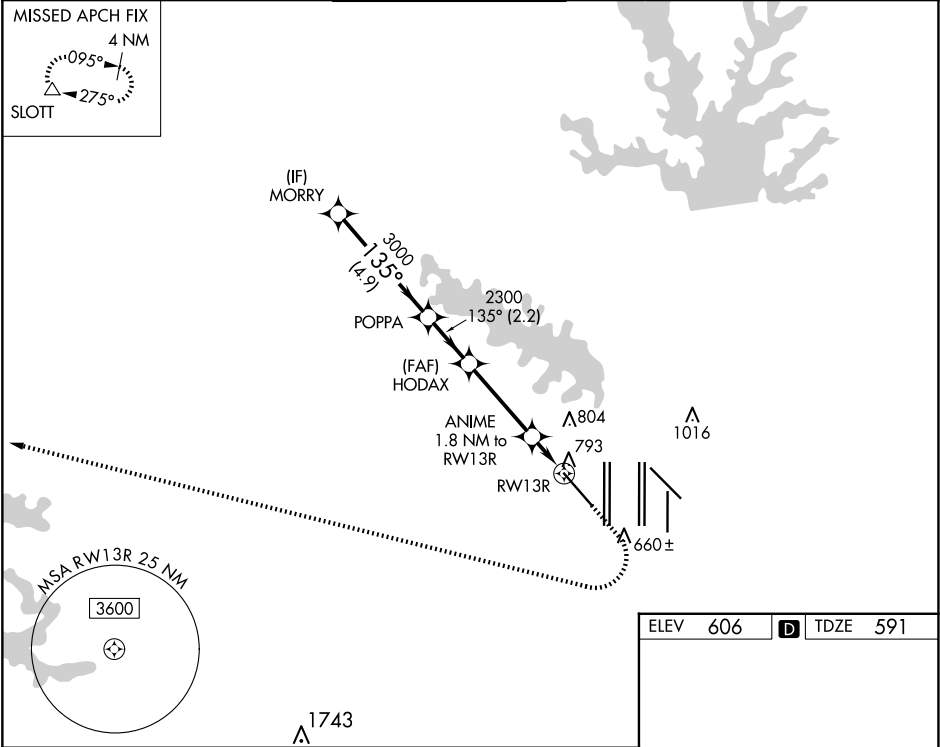


WAAS CH 72742 W13A	APP CRS 135°	Rwy Ldg 9300 TDZE 591 Apt Elev 606
--	------------------------	---

RNAV (GPS) Y RWY 13R

DALLAS-FORT WORTH INTL (DFW)

RNP APCH - GPS. ▼ For uncompensated Baro-VNAV systems, LNAV/VNAV NA below -8° C or above 54° C. For inop ALS, increase LNAV/VNAV all Cats visibility to RVR 6000 and LNAV Cat C/D visibility to 1½ SM.		MALSR ⚠	MISSED APPROACH: Climb to 1100 then climbing right turn to 3000 direct SLOTT and hold.	
D-ATIS ARR 123.775 DEP 135.925	LONE STAR APP CON 133.15 118.1	DFW TOWER 126.55 127.5 EAST 124.15 134.9 WEST	GND CON 121.65 121.8 EAST 121.85 WEST	CLNC DEL 128.25
		CPDLC		



ELEV 606		TDZE 591
VGSI and RNAV glidepath not coincident (VGSI Angle 3.00/TCH 71).		1100 3000 SLOTT
MORRY POPPA HODAX ANIME 1.8 NM to RWY13R RWY13R		135°
GP 3.00° TCH 55		135°
4.9 NM 2.2 NM 3.4 NM 1.8 NM		135°
CATEGORY	A	B
LPV DA	791/18	200 (200-½)
LNAV/VNAV DA	991/35	400 (400-¾)
LNAV MDA	1080/24	489 (500-½)
		1080/50 489 (500-1)

HIRL all Rwys
REIL Rwy's 13L and 31L
TDZ/CL all Rwy's except 13L and 31L