

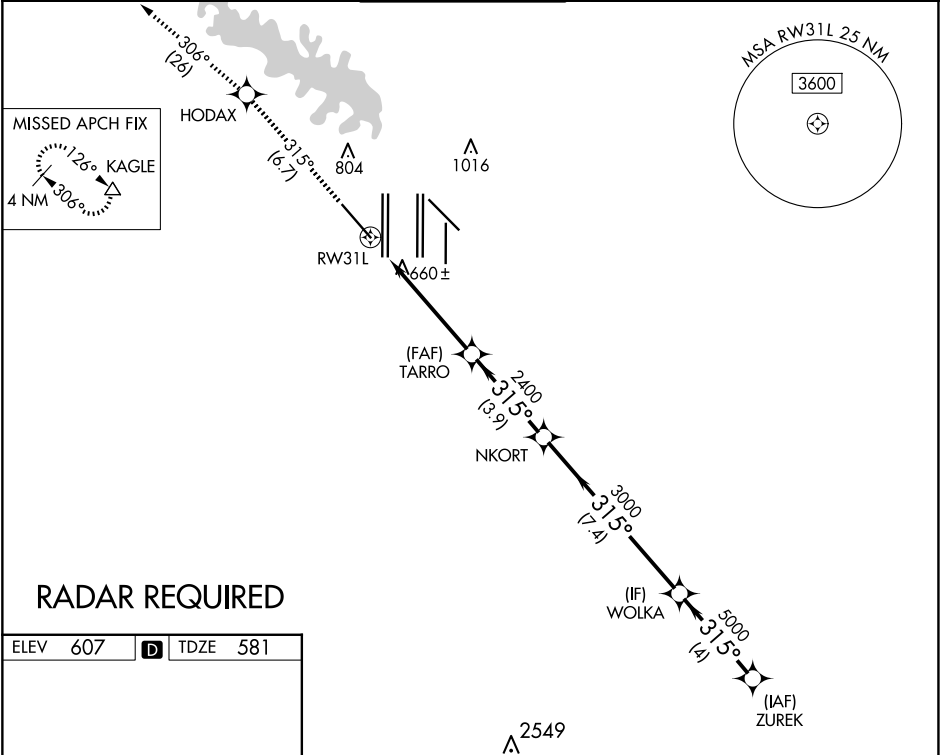
APP CRS 315°	Rwy Ldg TDZE Apt Elev	9300 581 607
-----------------	-----------------------------	--------------------

RNAV (RNP) Z RWY 31L

DALLAS-FORT WORTH INTL (DFW)

For uncompensated Baro-VNAV systems, procedure NA below -4°C (25°F) or above 54°C (130°F). Simultaneous approach authorized with Rwy 31R. GPS Required. Use of FD or AP providing RNAV track guidance required during simultaneous operations.	MISSED APPROACH: Climb to 3000 on track 315° to HODAX and on track 306° to KAGLE and hold.
--	--

D-ATIS ARR 123.775 DEP 135.925	LONE STAR APP CON 118.425 127.075 119.4	DFW TOWER 126.55 127.5 EAST 124.15 134.9 WEST	GND CON 121.65 121.8 EAST 121.85 WEST	CLNC DEL 128.25	CPDLC
--------------------------------------	--	---	---	--------------------	-------



ELEV 607	TDZE 581
HIRL all Rwy's REIL Rwy's 13L and 31L TDZ/CL all Rwy's except 13L and 31L	
3000 HODAX tr 315° KAGLE tr 306° VGSI and RNAV glidepath not coincident (VGSI Angle 3.13/TCH 72).	
RW31L 2400 3000 5000 5000 GP 3.00° TCH 54	
5.6 NM 3.9 NM 7.4 NM 4 NM	
CATEGORY	A B C D
RNP 0.30 DA	951/60 370 (400-1¼)
AUTHORIZATION REQUIRED	