

WAAS CH <b>40025</b> <b>W35D</b>	APP CRS <b>356°</b>	Rwy Ldg <b>13400</b> TDZE <b>563</b> Apt Elev <b>607</b>
--	------------------------	--

RNAV (GPS) RWY 35C  
DALLAS-FORT WORTH INTL (DFW)

▼ For uncompensated Baro-VNAV systems, LNAV/VNAV NA below -4°C (25°F) or above 54°C (130°F). For inop ALSF, increase LNAV/VNAV all Cats visibility to RVR 6000. Simultaneous approach authorized with Rwy 36 L/R and Rwy 35R. DME/DME RNP-0.3 NA. LNAV procedure NA during simultaneous operations. Use of FD or AP providing RNAV track guidance required during simultaneous operations.

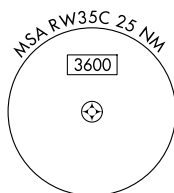
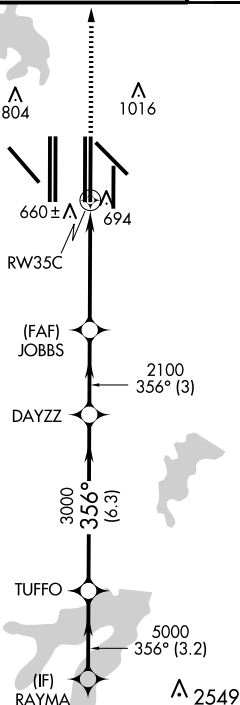
ALSF-2

**MISSED APPROACH:**  
Climb to 3000 direct  
BOSSI and hold.

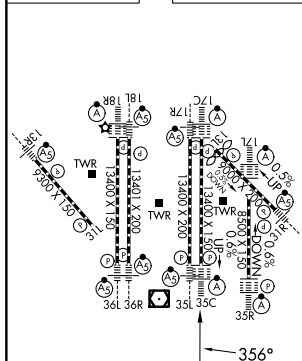
D-ATIS	LONE STAR APP CON	DFW TOWER	GND CON	CLNC DEL	CPDLC
ARR <b>123.775</b>		<b>126.55</b> <b>127.5</b> EAST	<b>121.65</b> <b>121.8</b> EAST		
DEP <b>135.925</b>	<b>127.075</b>	<b>124.15</b> <b>134.9</b> WEST	<b>121.85</b> WEST	<b>128.25</b>	

## RADAR REQUIRED

MISSED APCH FIX



ELEV 607	<b>D</b>	TDZE 563
----------	----------	----------



HIRL all Rwys	
REIL Rwys 13L and 31L	
TDZ/CL all Rwys except 13L and 31L	

