

WAAS CH 86807 W18A	APP CRS 176°	Rwy Ldg 13401 TDZE 602 Apt Elev 606	RNAV (GPS) RWY 18L DALLAS-FORT WORTH INTL (DFW)	
--	------------------------	--	---	--

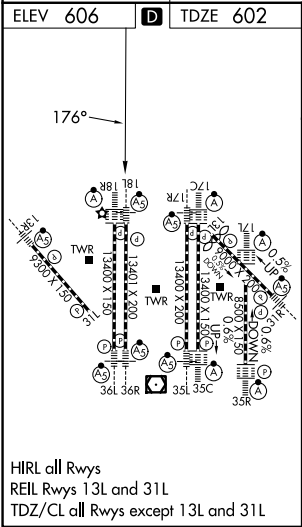
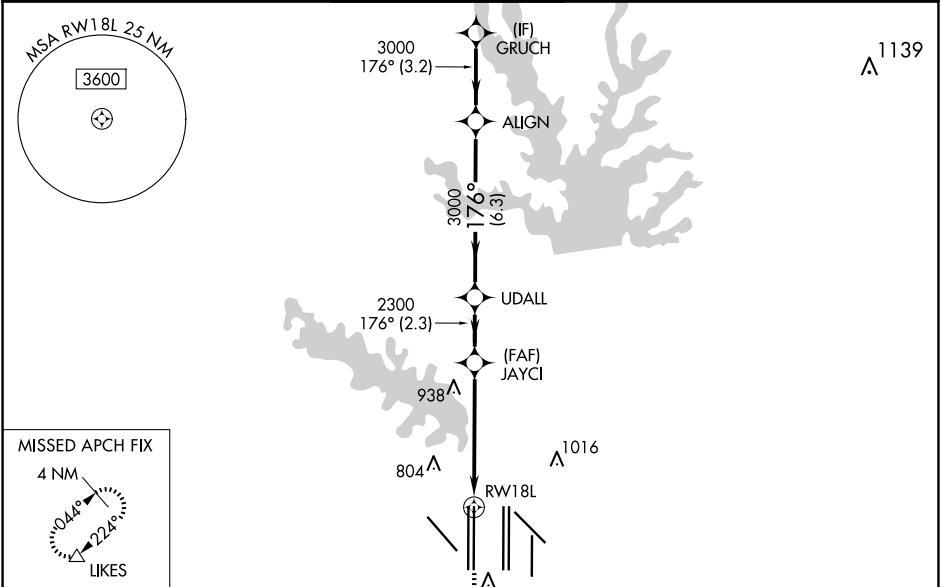
RADAR required for procedure entry. RNP APCH.

Simultaneous approach authorized with Rwy 17L/C/R. For uncompensated Baro-VNAV systems, LNAV/VNAV NA below -4°C or above 54°C. LNAV procedure NA during simultaneous operations. Use of FD or AP providing RNAV track guidance required during simultaneous operations. For inop ALS, increase LNAV/VNAV all Cats visibility to RVR 6000 and LNAV Cats C and D visibility to 1¾ SM.



MISSED APPROACH: Climb to 1100, then climbing right turn to 3000 direct LIKES and hold.

D-ATIS ARR 123.775 DEP 135.925	LONE STAR APP CON 118.425	DFW TOWER 126.55 127.5 EAST 124.15 134.9 WEST	GND CON 121.65 121.8 EAST 121.85 WEST	CLNC DEL 128.25	CPDLC
--	-------------------------------------	---	---	---------------------------	-------



1100	3000	LIKES	VGSi and RNAV glidepath not coincident (VGSi Angle 3.00/TCH 70).		GRUCH
*LNAV only.		JAYCI	UDALL	ALIGN	4000
*1.7 NM to RW18L		2300	3000	3000	GP 3.00° TCH 55
1.7 NM		3.5 NM	2.3 NM	6.3 NM	3.2 NM
CATEGORY	A	B	C	D	
LPV DA	802/18 200 (200-½)				
LNAV/VNAV DA	1013/40 411 (500-¾)				
LNAV MDA	1220/24 618 (700-½)		1220-13/8 618 (700-1¾)		