

WAAS CH <b>4000B</b> <b>W17B</b>	APP CRS <b>176°</b>	Rwy Ldg TDZE <b>545</b> Apt Elev <b>607</b>
--	------------------------	---

RNAV (GPS) RWY 17L

DALLAS-FORT WORTH INTL (DFW)

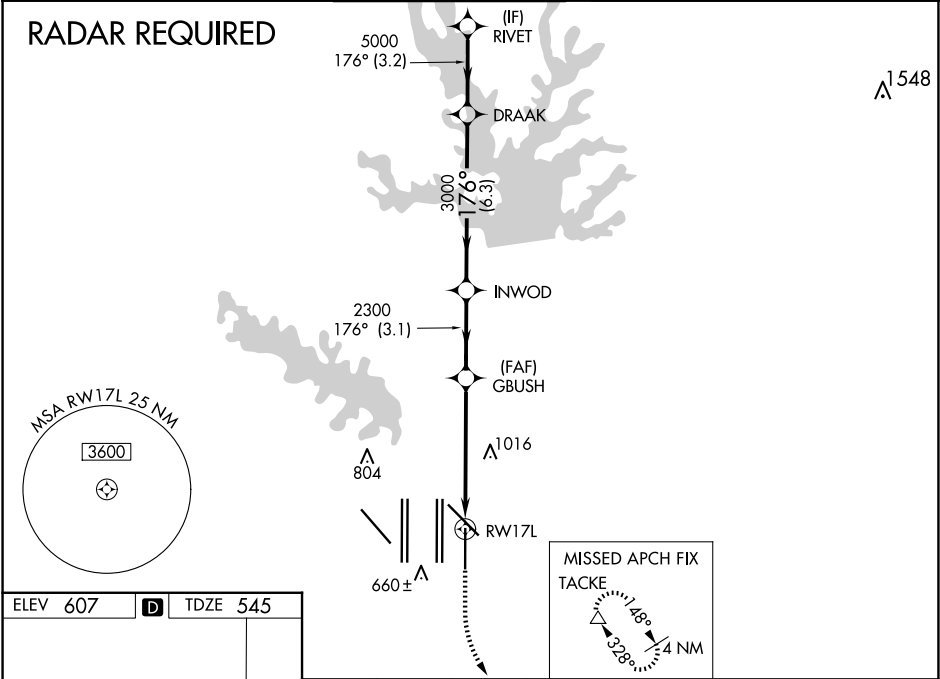
⚠

For uncompensated Baro-VNAV systems, LNAV/VNAV NA below -5°C (23°F) or above 54°C (130°F). DME/DME RNP-0.3 NA. Simultaneous approach authorized with Rwy 17C/R and Rwy 18L/R. LNAV procedure NA during simultaneous operations. Use of FD or AP providing RNAV track guidance required during simultaneous operations.

ALSIF-2

MISSED APPROACH: Climb to 1020 then climbing left turn to 3000 direct TACKE and hold.

D-ATIS ARR <b>123.775</b> DEP <b>135.925</b>	LONE STAR APP CON <b>119.4</b>	DFW TOWER <b>126.55 127.5 EAST</b> <b>124.15 134.9 WEST</b>	GND CON <b>121.65 121.8 EAST</b> <b>121.85 WEST</b>	CLNC DEL <b>128.25</b>	CPDLC
--	-----------------------------------	---	---	---------------------------	-------



ELEV <b>607</b>	<b>D</b>	TDZE <b>545</b>	<div><div>1020</div><div>3000</div><div>TACKE</div><div>VGSI and RNAV glidepath not coincident (VGSI Angle 3.00/TCH 77).</div></div>			
<div></div>			<div><div>*LNAV only.</div><div>*2 NM to RW17L</div><div>GBUSH</div><div>INWOD</div><div>DRAAK</div><div>RIVET</div><div>5000</div><div>3000</div><div>2300</div><div>176°</div><div>GP 3.00° TCH 56</div></div>			
			<div><div>2 NM</div><div>3.4 NM</div><div>3.1 NM</div><div>6.3 NM</div><div>3.2 NM</div></div>			
CATEGORY			A B C D			
LPV DA			745/18 200 (200-½)			
LNAV/VNAV DA			1063/60 518 (500-1¼)			
LNAV MDA			1240/24 695 (700-½) 1240-1½ 695 (700-1½)			