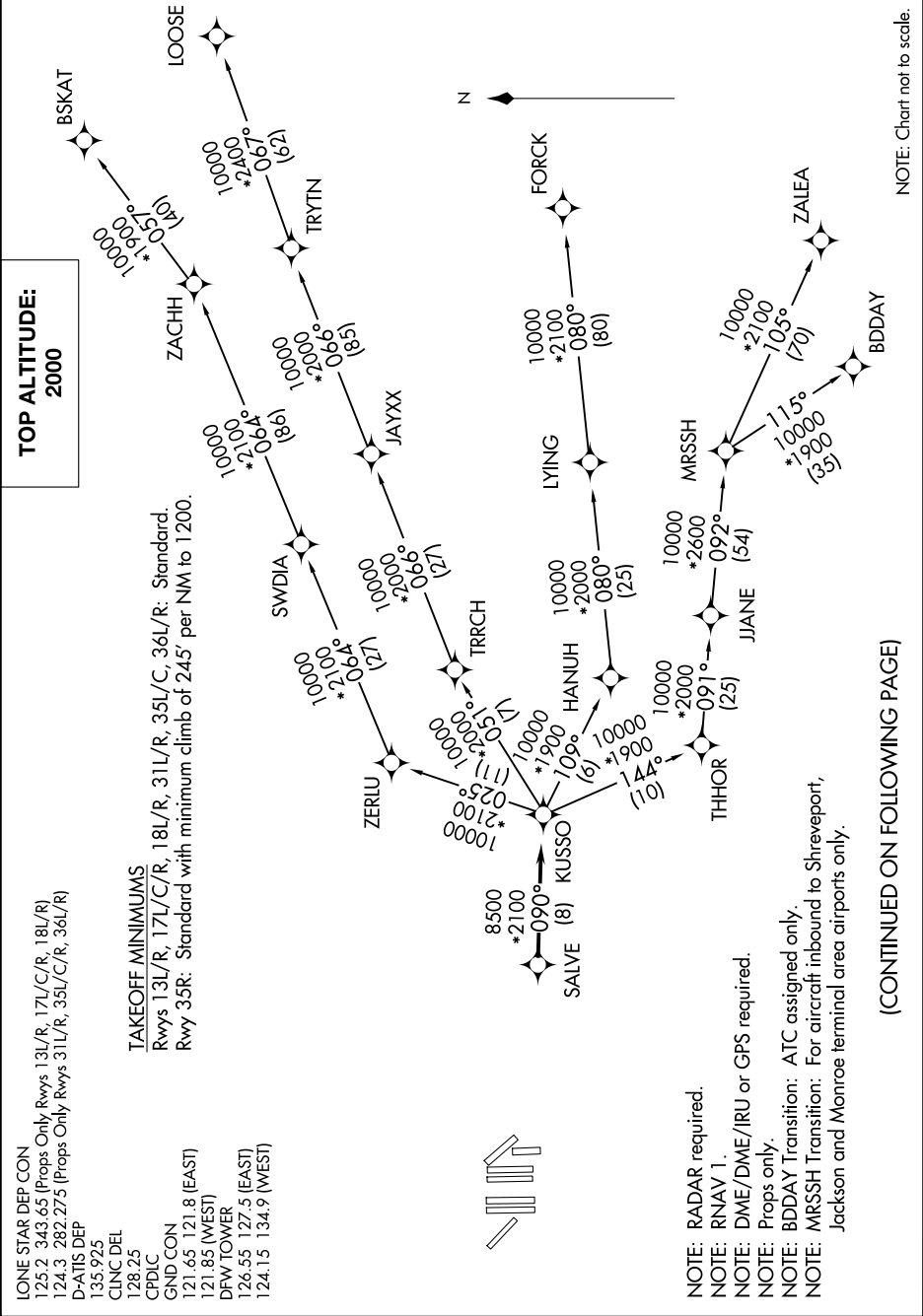


SC-2, 07 AUG 2025 to 04 SEP 2025

LONE STAR DEP CON  
125.2 343.65 (Props Only Rwy 13L/R, 17L/C/R, 18L/R)  
124.3 282.275 (Props Only Rwy 31L/R, 35L/C/R, 36L/R)  
D-ATIS DEP  
135.925  
CLNC DEL  
128.25  
CPDLC  
GND CON  
121.65 121.8 (EAST)  
121.85 (WEST)  
DFW TOWER  
126.55 127.5 (EAST)  
124.15 134.9 (WEST)

TAKEOFF MINIMUMS  
Rwys 13L/R, 17L/C/R, 18L/R, 31L/R, 35L/C, 36L/R: Standard.  
Rwy 35R: Standard with minimum climb of 245' per NM to 1200.

TOP ALTITUDE:  
2000



SC-2, 07 AUG 2025 to 04 SEP 2025