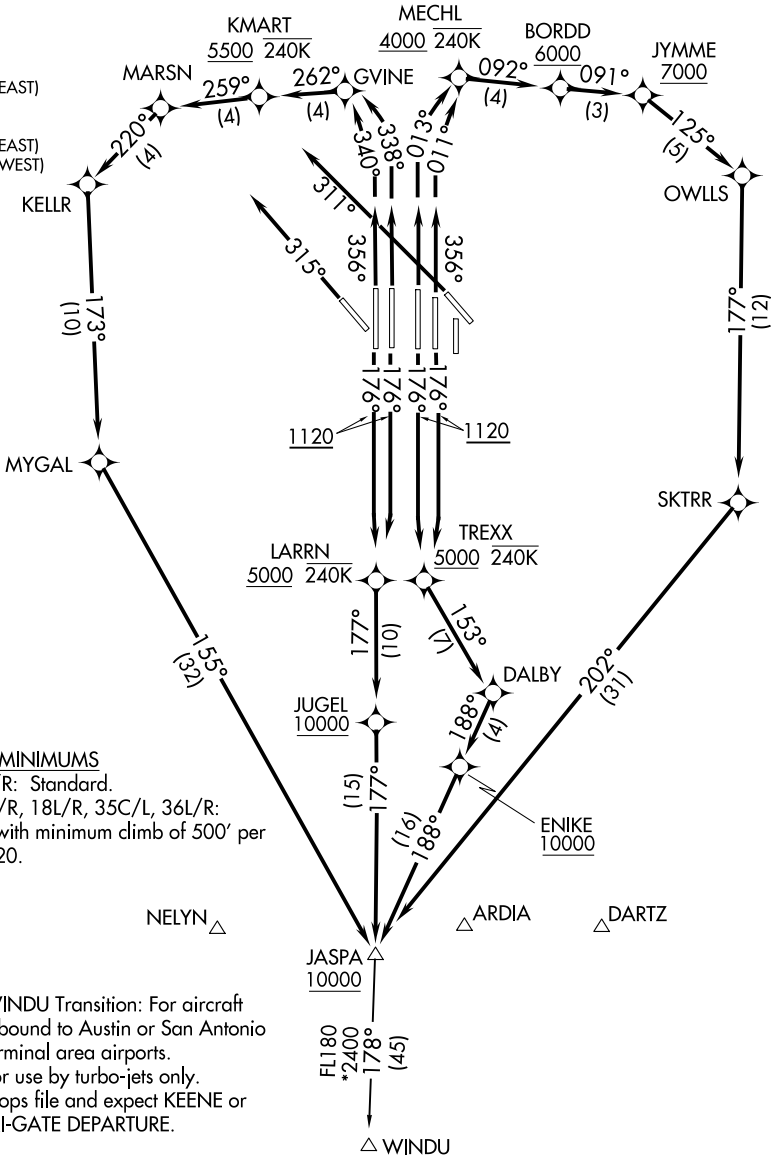


LONE STAR DEP CON  
125.125 353.95 (Rwys 17C/R)  
125.125 353.95 (Rwys 18L/R)  
126.475 363.15 (Rwys 36L/R)  
118.55 290.35 (Rwys 35L/C)  
D-ATIS DEP  
135.925  
CLNC DEL  
128.25  
CPDLC  
GND CON  
121.65 121.8 (EAST)  
121.85 (WEST)  
DFW TOWER  
126.55 127.5 (EAST)  
124.15 134.9 (WEST)

RNAV 1- DME/DME/IRU or GPS.  
RADAR required.

TOP ALTITUDE:  
RWYS 13L/R, 17L/C/R,  
18L/R, 35L/C/R, 36L/R: 10000  
RWYS 31L/R: 5000



TAKEOFF MINIMUMS  
Rwys 31L/R: Standard.  
Rwys 17C/R, 18L/R, 35C/L, 36L/R:  
Standard with minimum climb of 500' per  
NM to 1120.

NOTE: WINDU Transition: For aircraft  
inbound to Austin or San Antonio  
terminal area airports.  
NOTE: For use by turbo-jets only.  
NOTE: Props file and expect KEENE or  
TRI-GATE DEPARTURE.

(CONTINUED ON FOLLOWING PAGE) NOTE: Chart not to scale.