

LOC/DME I-LWN

109.5

APP CRS

135°

Rwy Ldg TDZE

9300 591

Apt Elev

606

Chan 32

ILS Z or LOC Z RWY 13R

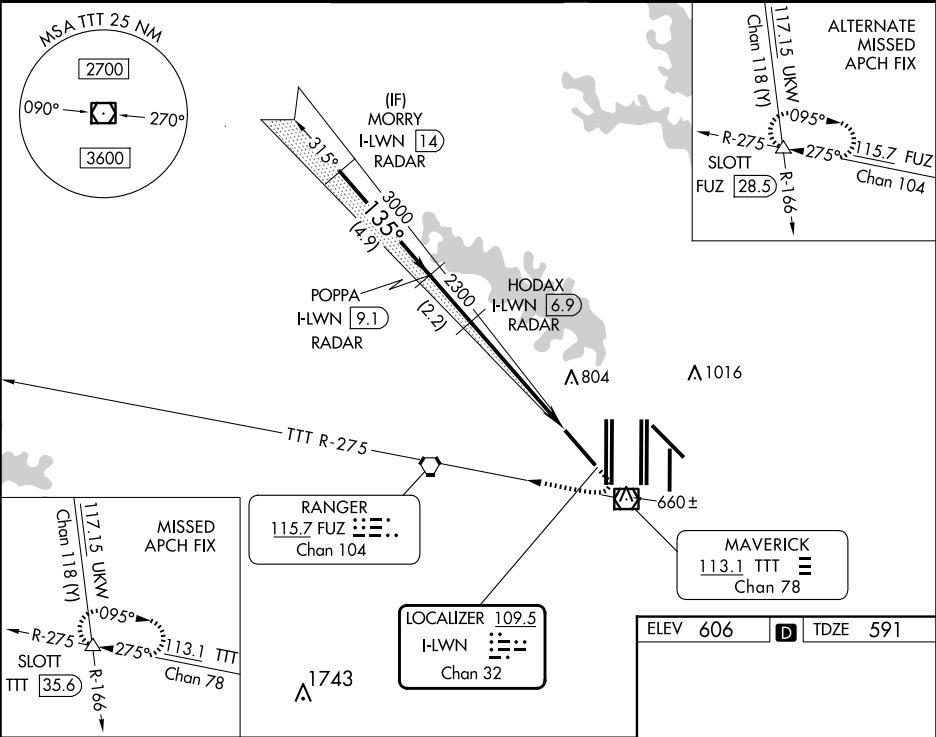
DALLAS-FORT WORTH INTL (DFW)

RADAR required for procedure entry.
DME or RADAR required for LOC only.

MALSR

MISSED APPROACH: Climb to 1560 then climbing right turn to 3000 on heading 230° and TTT VOR/DME R-275 to SLOTT INT/TTT 35.6 DME and hold.

D-ATIS	LONE STAR APP CON	DFW TOWER	GND CON	CINC DEL	CPDLC
ARR 123.775	133.15 118.1	126.55 127.5 EAST	121.65 121.8 EAST	128.25	
DEP 135.925		124.15 134.9 WEST	121.85 WEST		



VGSI and ILS glidepath not coincident (VGSI Angle 3.00/TCH 71).		1560	3000	TTT R-275	SLOTT
		↑	hdg 230°		△
CATEGORY	A	B	C	D	
S-ILS 13R	791/18		200 (200-½)		
S-LOC 13R	1240/24	649 (700-½)	1240-1⅓	649 (700-1⅓)	

HIRL all Rwsys

REIL Rwsys 13L and 31L

TDZ/CL all Rwsys except 13L, and 31L

FAF to MAP 5.2 NM

Knots	60	90	120	150	180
Min:Sec	5:12	3:28	2:36	2:05	1:44