

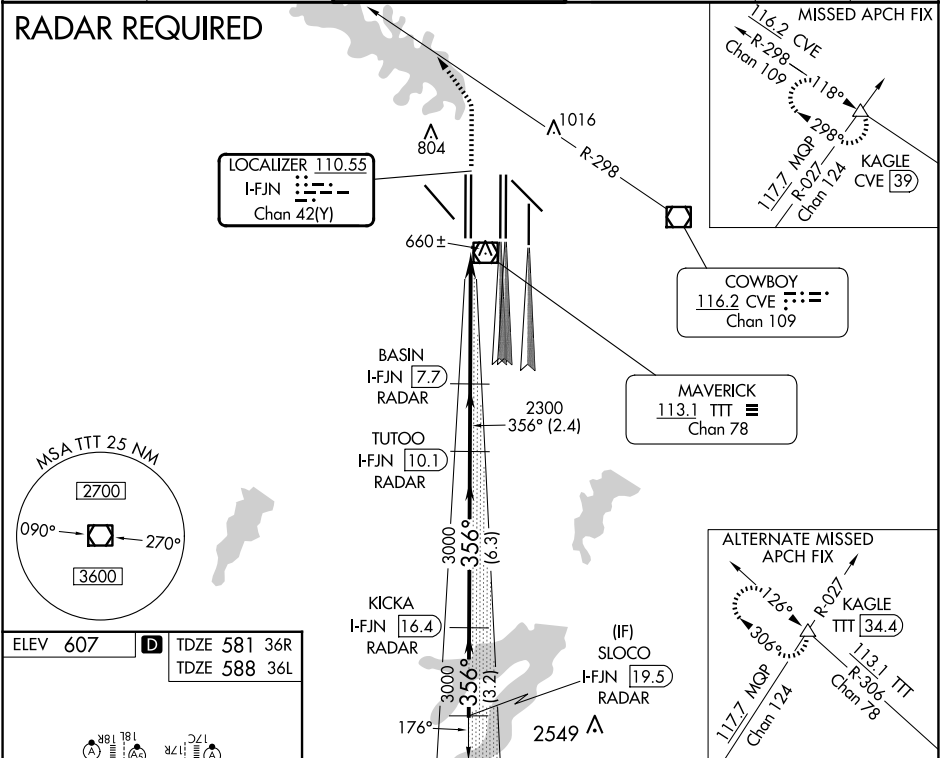
LOC/DME I-FJN 110.55 Chan 42 (Y)	APP CRS 356°	Rwy Ldg 36R 13401 13400 36L TDZE 581 588 Apt Elev 607 607	ILS or LOC RWY 36R DALLAS-FORT WORTH INTL (DFW)
--	------------------------	---	--

Simultaneous approach authorized with Rwy 35L/C/R.
Inop table does not apply to Sidestep 36L Cats A and B.
DME or RADAR required.

Rwys 36R/L
MALSR

MISSED APPROACH: Climb to 1100, then climbing left turn to 3000 on heading 320° and CVE VOR/DME R-298 to KAGLE INT/CVE 39 DME and hold.

D-ATIS ARR 123.775 DEP 135.925	LONE STAR APP CON 118.425	DFW TOWER 126.55 127.5 EAST 124.15 134.9 WEST	GND CON 121.65 121.8 EAST 121.85 WEST	CLNC DEL 128.25	CPDLC
--	-------------------------------------	---	---	---------------------------	-------



<p>HIRL all Rwys REIL Rwys 13L and 31L TDZ/CL all Rwys except 13L and 31L</p> <p>FAF to MAP 5.3 NM</p> <p>Knots 60 90 120 150 180 Min:Sec 5:18 3:32 2:39 2:07 1:46</p>						
	*LOC only					
	*I-FJN 3.5					
	*I-FJN 7.7					
	*I-FJN 10.1					
*I-FJN 16.4						
*I-FJN 19.5						
356°						
2300						
3000						
3000						
356°						
4000						
GS 3.00° TCH 50						
VGSI and ILS glidepath not coincident (VGSI Angle 3.00/TCH 66).						
1.1 NM 4.2 NM 2.4 NM 6.3 NM 3.2 NM						
CATEGORY	A			B	C	D
S-ILS 36R	781/18			200 (200-½)		
S-LOC 36R	1000/24 419 (400-½)			1000/40 419 (400-¾)		
SIDESTEP 36L	1080/50 492 (500-1)			1080-1½ 492 (500-1½)		