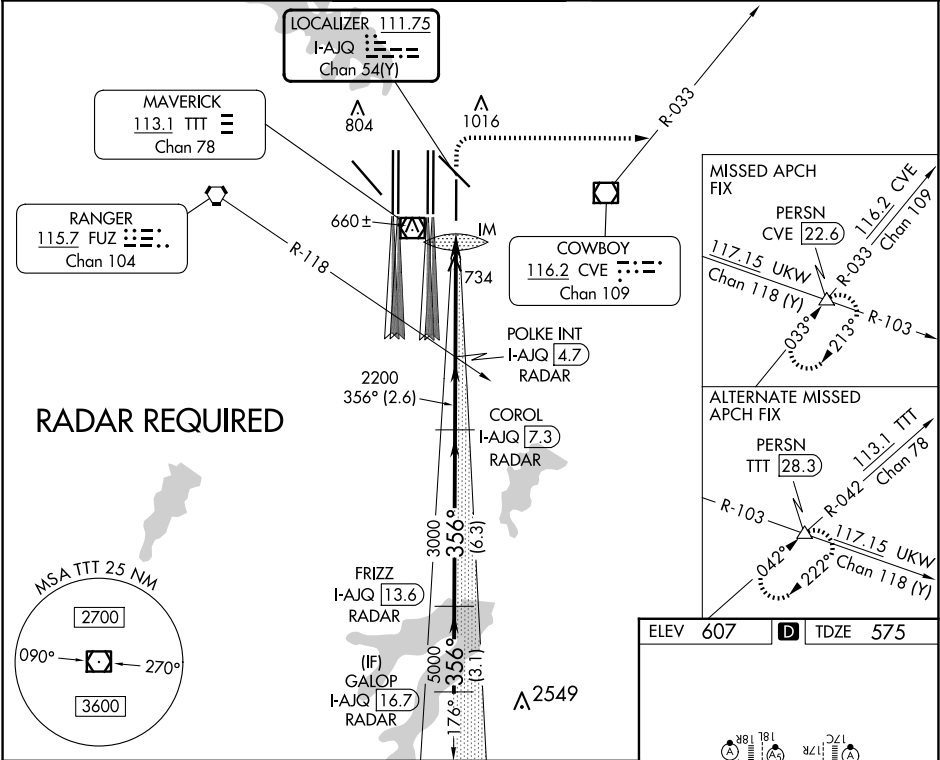


LOC/DME I-AJQ 111.75 Chan 54 (Y)	APP CRS 356°	Rwy Ldg TDZE Apt Elev 8500 575 607	ILS or LOC RWY 35R DALLAS-FORT WORTH INTL (DFW)	
--	------------------------	--	--	--

Simultaneous approach authorized with Rwy 36L/R and Rwy 35L/C. DME required.		ALSF-2 	MISSED APPROACH: Climb to 1040 then climbing right turn to 3000 on heading 090° and CVE VOR/DME R-033 to PERSN/CVE 22.6 DME and hold.	
---	--	------------	---	--

D-ATIS ARR 123.775 DEP 135.925	LONE STAR APP CON 119.4	DFW TOWER 126.55 127.5 EAST 124.15 134.9 WEST	GND CON 121.65 121.8 EAST 121.85 WEST	CLNC DEL 128.25	CPDLC
--	-----------------------------------	---	---	---------------------------	-------



GALOP I-AJQ 16.7 RADAR		FRIZZ I-AJQ 13.6 RADAR		COROL I-AJQ 7.3 RADAR		POLKE INT I-AJQ 4.7 RADAR		1040 3000		CVE R-033		PERSN	
5000 356°		5000		3000		2200		*I-AJQ 1.1		I-AJQ DME ANTENNA IM		*LOC only	
GS 3.00° TCH 58													
VGSI and ILS glidepath not coincident (VGSI Angle 3.00/TCH 73).													
3.1 NM		6.3 NM		2.6 NM		3.7 NM		1.1		0.1			
CATEGORY		A		B		C		D					
S-ILS 35R				775/18		200 (200-½)							
S-LOC 35R		1040/24		465 (500-½)		1040/50		465 (500-1)					

ELEV 607		TDZE 575	
HIRL all Rwy's		REIL Rwy's 13L and 31L	
TDZ/CL all Rwy's except 13L, and 31L		FAF to MAP 4.9 NM	
Knots	60	90	120 150 180
Min:Sec	4:54	3:16	2:27 1:58 1:38