

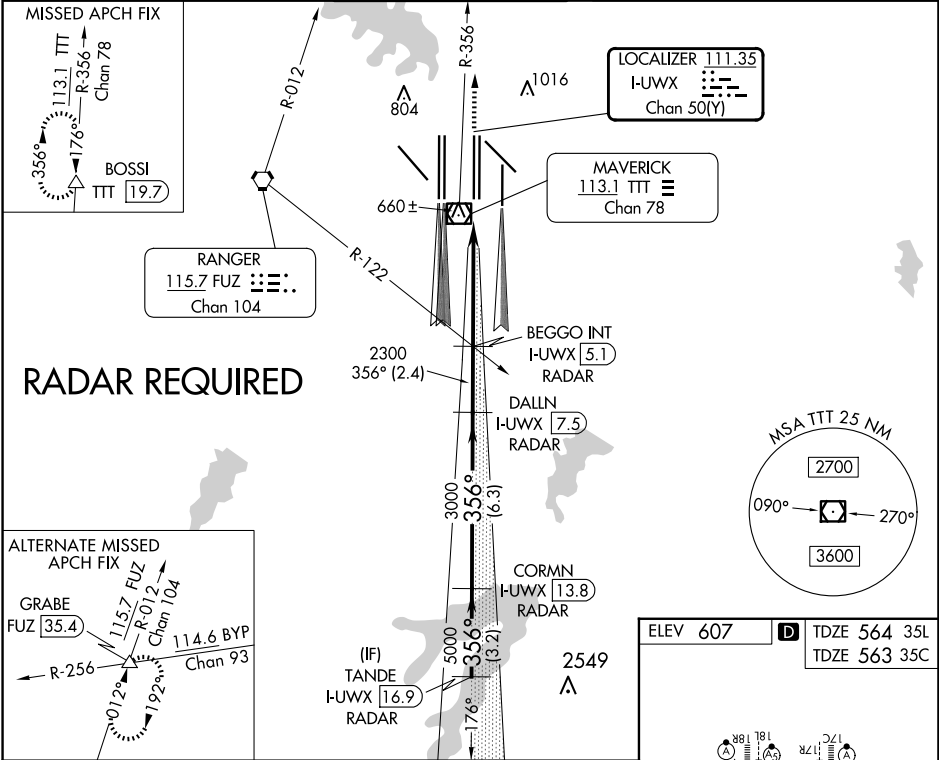


LOC/DME I-UWX 111.35 Chan 50 (Y)	APP CRS 356°	Rwy Ldg	35L	35C
		TDZE	564	563
		Apt Elev	607	607

ILS or LOC RWY 35L
DALLAS-FORT WORTH INTL (DFW)

V	DME or RADAR required. Simultaneous approach authorized with Rwy 36 L/R and Rwy 35R. Inop table does not apply to Sidestep Rwy 35C.			Rwy 35L MALSR 	Rwy 35C ALSF-2 	MISSED APPROACH: Climb to 2000 then climb to 3000 on TTT VOR/DME R-356 to BOSSI/TTT 19.7 DME and hold.		
	D-ATIS ARR 123.775 DEP 135.925	LONE STAR APP CON 127.075	DFW TOWER 126.55 127.5 EAST 124.15 134.9 WEST			GND CON 121.65 121.8 EAST 121.85 WEST	CLNC DEL 128.25	CPDLC



VGSI and ILS glidepath not coincident (VGSI Angle 3.00/TCH 63).			
TANDE I-UWX [16.9] RADAR	CORMN I-UWX [13.8] RADAR	DALLN I-UWX [7.5] RADAR	BEGGO INT I-UWX [5.1] RADAR
6000	5000	356°	3000
GS 3.00° TCH 47	3.2 NM	6.3 NM	2.4 NM
2300	4.1 NM	1.2 NM	
*LOC only			
CATEGORY	A	B	C
S-ILS 35L	764/18 200 (200-½)		
S-LOC 35L	1000/24	436 (400-½)	1000/40 436 (400-¾)
SIDESTEP 35C	1000-1 437 (400-1)	1000-1½ 437 (400-1½)	1000-2 437 (400-2)

