

LOC/DME I-RRR <b>110.9</b> Chan <b>46</b>	APP CRS <b>311°</b>	Rwy Ldg <b>8373</b> TDZE <b>523</b> Apt Elev <b>607</b>
---	------------------------	---

ILS or LOC RWY 31R  
DALLAS-FORT WORTH INTL (DFW)

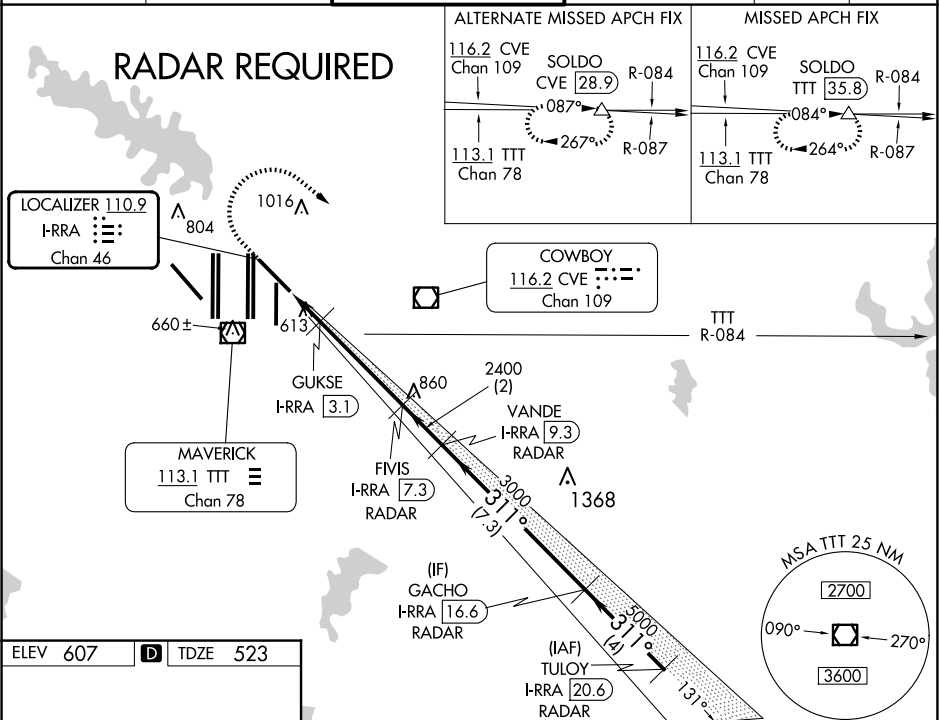
**T** Simultaneous approach authorized. DME required.  
For inop ALS increase S-LOC 31R GUKSE FIX minimums  
Cat C/D visibility to RVR 5500.



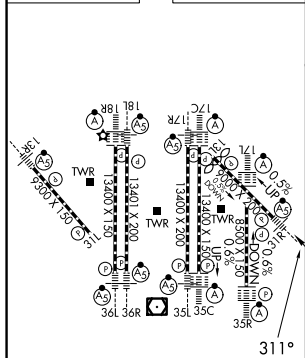
**MISSED APPROACH:** Climb to 1100 then climbing right turn to 3000 on heading 125° and TTT VOR/DME R-084 to SOLDO/TTT 35.8 DME and hold.

D-ATIS	LONE STAR APP CON	DFW TOWER	GND CON	CLNC DEL	CPDLC
ARR <b>123.775</b>		<b>126.55</b> <b>127.5</b> EAST	<b>121.65</b> <b>121.8</b> EAST		
DEP <b>135.925</b>	<b>135.5</b> <b>125.2</b>	<b>124.15</b> <b>134.9</b> WEST	<b>121.85</b> WEST	<b>128.25</b>	

## RADAR REQUIRED



ELEV 607	<b>D</b>	TDZE 523
----------	----------	----------



HIRL all Rwy's					
REL Rwy's 13L and 31L					
TDZ/CL all Rwy's except 13L and 31L					
FAF to MAP 5.8 NM					
Knots	60	90	120	150	180
Min:Sec	5:48	3:52	2:54	2:19	1:56

1100 ↑	3000 hdg 125°	TTT R-084	SOLDO △	FMS I-RRR [7.3]	VANDE I-RRR [9.3]	GACHO I-RRR [16.6]	TULOY I-RRR [20.6]
*LOC only.				GUKE I-RRR [3.1]	2400 RADAR	311° 5000 RADAR	311° 5000 RADAR
				GS 3.00° TCH 53			
CATEGORY	A	B	C	D			
S-ILS 31R	723/18 200 (200-½)						
S-LOC 31R	1060/24	537 (500-½)	1060/55	537 (500-1¼)			
GUKE FIX MINIMUMS							
S-LOC 31R	880/24	357 (300-½)	880/30	357 (300-¾)			