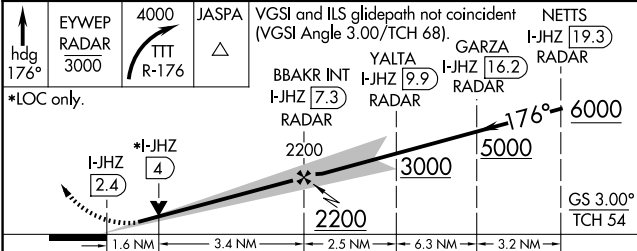
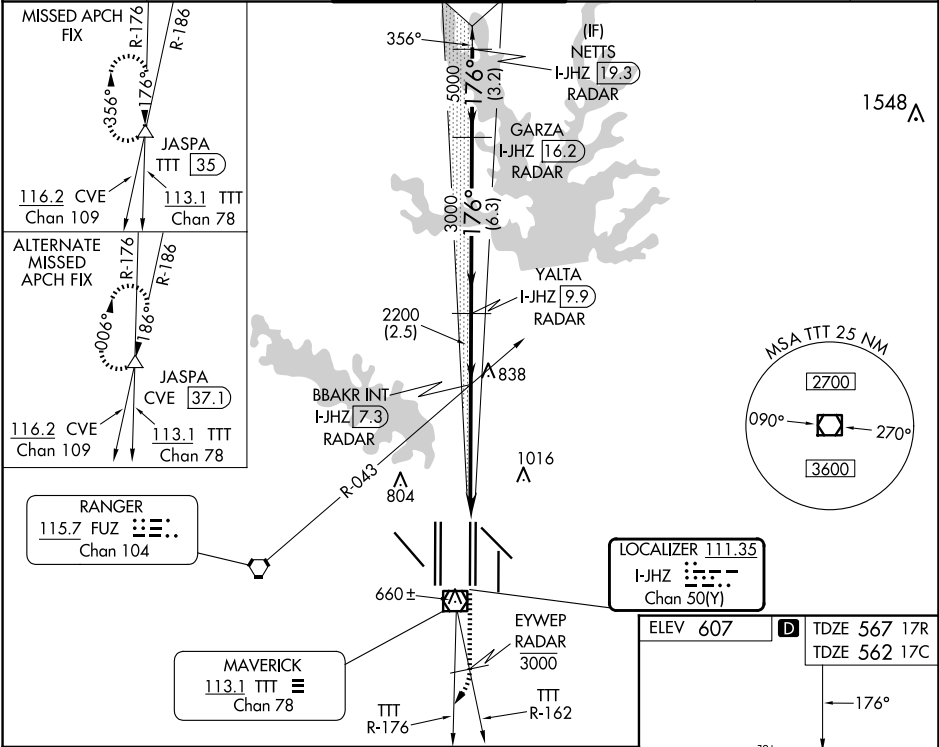


LOC/DME I-JHZ <b>111.35</b> Chan <b>50(Y)</b>	APP CRS <b>176°</b>	Rwy Ldg 17R <b>13400</b> 17C <b>13400</b> TDZE <b>567</b> <b>562</b> Apt Elev <b>607</b> <b>607</b>
---	------------------------	---

ILS or LOC RWY 17R  
DALLAS-FORT WORTH INTL (DFW)

DME and RADAR required.		Rwy 17R MALSR	Rwy 17C ALSF-2	MISSED APPROACH: Climb on heading 176° to cross EYWEP/RADAR at or below 3000, then climbing right turn to 4000 on TTT VOR/DME R-176 to JASPA/TTT 35 DME and hold.	
Simultaneous approach authorized with Rwy 17L, 18L/R.					
D-ATIS ARR <b>123.775</b> DEP <b>135.925</b>	LONE STAR APP CON <b>127.075</b>	DFW TOWER <b>126.55</b> <b>127.5</b> EAST <b>124.15</b> <b>134.9</b> WEST		GND CON <b>121.65</b> <b>121.8</b> EAST <b>121.85</b> WEST	CLNC DEL <b>128.25</b>
				CPDLC	



CATEGORY	A	B	C	D
S-ILS 17R	767/18 200 (200-1/2)			
S-LOC 17R	1140/24 573 (600-1/2)	1140-1 1/4 573 (600-1 1/4)		
SIDESTEP 17C	1140-1 578 (600-1)	1140-1 1/2 578 (600-1 1/2)	1140-2 578 (600-2)	

