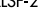
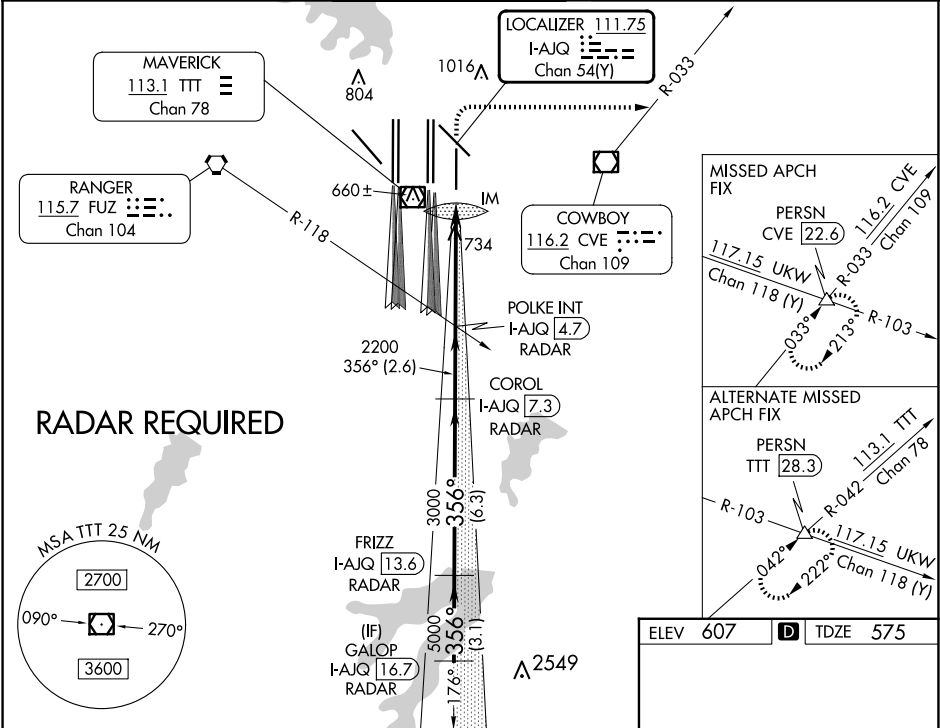


LOC/DME I-AJQ 111.75 Chan 54 (Y)	APP CRS 356°	Rwy Ldg TDZE Apt Elev 8500 575 607
--	------------------------	--

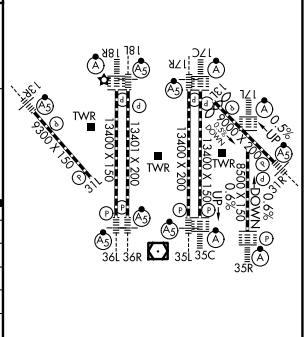
ILS RWY 35R (CAT II & III)
DALLAS-FORT WORTH INTL (DFW)

Simultaneous approach authorized with Rwy 36L/R and Rwy 35L/C. DME required.				ALSF-2 		MISSED APPROACH: Climb to 1040 then climbing right turn to 3000 on heading 090° and CVE VOR/DME R-033 to PERSN/CVE 22.6 DME and hold.			
D-ATIS ARR 123.775 DEP 135.925		LONE STAR APP CON 119.4		DFW TOWER 126.55 127.5 EAST 124.15 134.9 WEST		GND CON 121.65 121.8 EAST 121.85 WEST		CLNC DEL 128.25	CPDLC



GALOP I-AJQ 16.7 RADAR	FRIZZ I-AJQ 13.6 RADAR	COROL I-AJQ 7.3 RADAR	POLKE INT I-AJQ 4.7 RADAR	1040 3000	CVE R-033	PERSN
5000	356°	5000	3000	2200	IM 671	
GS 3.00° TCH 58	5000	3000	2200			
VGSI and ILS glidepath not coincident (VGSI Angle 3.00°/TCH 73).						
3.1 NM 6.3 NM 2.6 NM 4.9 NM 1375'						
CATEGORY	A	B	C	D		
S-ILS 35R	CAT II RA 94/12 100 DA 675					
S-ILS 35R	CAT IIIa RVR 07					
S-ILS 35R	CAT IIIb RVR 06					
S-ILS 35R	CAT IIIc NA					

CATEGORY II & III ILS - SPECIAL AIRCREW
& AIRCRAFT CERTIFICATION REQUIRED



HIRL all Rwy's
REIL Rwy's 13L and 31L
TDZ/CL all Rwy's except 13L, and 31L