

LOC/DME I-PKQ <u>110.3</u> Chan 40	APP CRS 356°	Rwy Ldg TDZE Apt Elev	13400 563 607
--	------------------------	-----------------------------	--

ILS RWY 35C (SA CAT I)
DALLAS-FORT WORTH INTL (DFW)

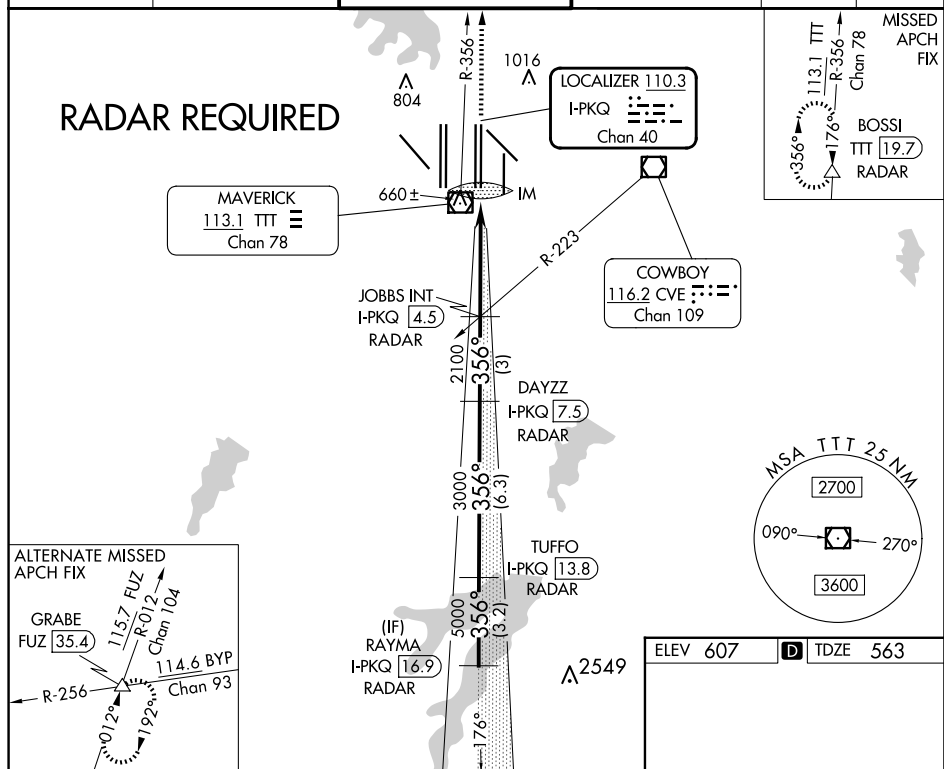
T DME or RADAR required.
Simultaneous approach authorized with Rwy 35R, Rwy 36L/R.
Requires specific OPSPEC, MSPEC, or LOA approval and use
of HUD to DA.

ALSF-2

MISSED APPROACH: Climb to 3000 on TTT VOR/DME R-356 to BOSSI/TTT 19.7 DME/RADAR and hold.

D-ATIS		DFW TOWER		GND CON		CLNC DEL 128.25	CPDLC
ARR	123.775	LONE STAR APP CON	126.55 127.5 EAST	121.65 121.8 EAST			
DEP	135.925	127.075	124.15 134.9 WEST	121.85 WEST			

RADAR REQUIRED



3000 ↑ TTT R-356	BOSSI △	VGS1 and ILS glidepath not coincident (VGS1 Angle 3.00/TCH 76).				RAYMA I-PKQ <u>16.9</u>
		JOBBS INT I-PKQ <u>4.5</u> RADAR	DAYZZ I-PKQ <u>7.5</u> RADAR	TUFFO I-PKQ <u>13.8</u> RADAR		
IM						
1050	4.6 NM	3 NM	6.3 NM	3.2 NM		
CATEGORY	A	B	C	D		
S-ILS 35C	RA 153/14 150 DA 713					

SA CATEGORY I ILS - SPECIAL AIRCREW
& AIRCRAFT CERTIFICATION REQUIRED

HIRL all Rwys
REIL Rwys 13L and 31L
TDZ/CL all Rwys except 13L and 31L